



## **PILLAR III DISCLOSURES**

According to Directives DI144-2014-15 and DI144-2014-14 of the Cyprus Securities & Exchange Commission for the prudential supervision of investment firms and Part Eight of Regulation (EU) No 575/2013 of the European Parliament and of the Council on prudential requirements for credit institutions and investment firms

**YEAR ENDED 31 DECEMBER 2020**

**April 2021**

**CONTENTS**

<b>Specific References to CRR .....</b>	<b>4</b>
<b>1. Introduction .....</b>	<b>9</b>
1.1 Information .....	9
1.2. Scope of application .....	9
1.3. Pillar III Regulatory Framework .....	10
1.3.1. Overview .....	10
1.3.2. Disclosure Policy: Basis and Frequency of Disclosure / Location and verification ..	11
1.4. Risk management objectives and policies .....	12
1.4.1. Risk Management Framework .....	13
1.4.2. Risk Statement .....	14
1.4.3. Risk Culture .....	16
1.4.4. Capital Requirements .....	16
1.5. Declaration of the Management Body .....	19
<b>2. Corporate Governance.....</b>	<b>20</b>
2.1. The Board of Directors .....	20
2.2. Number of Directorships held by members of the Board.....	20
2.3. Policy on Recruitment .....	21
2.4. Policy on Diversity .....	21
2.5. Information flow on risk to the management body .....	21
<b>3. Own Funds .....</b>	<b>23</b>
3.1. Tier 1 & Tier 2 Regulatory Capital .....	23
3.2. Main features of Common Equity Tier 1, Additional Tier 1 and Tier 2 instruments.....	25
3.3. Balance Sheet Reconciliation .....	26
<b>4. Compliance with Regulatory Capital and the overall Pillar II Rule .....</b>	<b>27</b>
4.1. Internal Capital .....	27
4.2. Approach to assessing adequacy of Internal Capital .....	27
<b>5. Pillar I Capital Requirements .....</b>	<b>29</b>
5.1. Credit Risk.....	29
5.1.1. Credit risk adjustments.....	29
5.1.2. Credit Risk – Risk Weighted Assets .....	30
5.1.3. Credit Risk – Risk Weighted Assets by Geographical distribution of the exposure classes.....	31
5.1.4. Credit Risk – Distribution of exposures by industry.....	32
5.1.5. Residual maturity broken down by exposure classes.....	33
5.2. Use of ECAIs.....	33

5.3. Securitisations.....	34
5.4. Counterparty Credit Risk.....	35
5.5. Market Risk .....	36
5.5.1. Equity Risk.....	36
5.5.2. Foreign Exchange Risk .....	36
5.5.3. Commodities Risk.....	39
5.5.4. Interest Rate Risk .....	39
5.6. Operational Risk .....	39
5.7. Credit Valuation Adjustment Risk .....	41
<b>6. Leverage Ratio .....</b>	<b>42</b>
<b>7. Other Risks.....</b>	<b>43</b>
7.1. Concentration Risk .....	43
7.2. Reputation Risk .....	43
7.3. Strategic Risk.....	44
7.4. Business Risk.....	44
7.5. Capital Risk Management .....	44
7.6. Regulatory Risk .....	44
7.7. Legal and Compliance Risk.....	45
7.8. IT Risk .....	45
7.9. Risk Reporting .....	45
7.10. Liquidity Risk.....	46
7.11. Conduct Risk .....	46
<b>8. Remuneration policy .....</b>	<b>47</b>
8.1. Remuneration System.....	47
8.2. Link between the pay and performance.....	48
8.3. Remuneration of Senior Management Personnel and Directors .....	49

**SPECIFIC REFERENCES TO CRR**

Scope of disclosure requirements		Section
431(1)	Requirement to publish Pillar III disclosures	<a href="#">1.2</a>
431(2)	Disclosures regarding operational risk.	<a href="#">5.6</a>
431(3)	Institution shall adopt a formal policy to comply with the disclosures and have policies for assessing their appropriateness, including their verification and frequency	<a href="#">1.3.2</a>
Non - material, proprietary or confidential information		Section
432	The policy on diversity with regard to selection of members of the management body	<a href="#">2.4</a>
	Own Funds	<a href="#">3</a>
	Remuneration policy	<a href="#">8</a>
Frequency of disclosure		Section
433	Disclosures must be published at least on an annual basis, in conjunction with the date of publication of the financial statements	<a href="#">1.3.2</a>
Means of disclosure		Section
434(1)	Determine the appropriate medium, location and means to publish the disclosures, preferably all disclosures in one medium	<a href="#">1.3.2</a>
434(2)	Equivalent disclosures made under accounting, listing or other requirements may be deemed to constitute compliance with Pillar III	Cross-references to accounting and other disclosures are indicated in the Report
Risk management objectives and policies		Section
435(1)	Disclosure of risk management objectives and policies for each category of risk	<a href="#">1.4</a>
435(1) (a)	strategies and processes	<a href="#">1.4.1</a>
435(1) (b)	the structure and organisational structure of the relevant risk management function	<a href="#">1.4.1</a>
435(1) (c)	the scope and nature of risk reporting and measurement systems	<a href="#">1.4.1</a>
435(1) (e)	Declaration approved by the management body on the adequacy of risk management arrangements	<a href="#">1.5</a>
435(1) (f)	Concise risk statement approved by the management body	<a href="#">1.4.2</a>
435(2)	Disclosure at least annually, regarding governance arrangements.	<a href="#">2.1</a>
435(2) (a)	Number of directorships held by members of the management body	<a href="#">2.2</a>
435(2) (b)	Recruitment policy for the selection of members of the management body and their actual knowledge, skills and	<a href="#">2.3</a>

	expertise	
<b>435(2) (c)</b>	Policy on diversity of management body, its objectives and targets and the extent to which these have been achieved	<a href="#">2.4</a>
<b>435(2) (e)</b>	Description of information flow on risk to the management body	<a href="#">2.5</a>
<b>Scope of application</b>		<b>Section</b>
<b>436(a)</b>	Name of institution.	<a href="#">1.1</a>
<b>436 (b)</b>	Difference in the basis of consolidation for accounting and prudential purposes, describing entities that are:	
<b>436 (b) (i)</b>	• Fully consolidated;	
<b>436 (b) (ii)</b>	• Proportionally consolidated;	<a href="#">1.2</a>
<b>436 (b) (iii)</b>	• Deducted from own funds;	
<b>436 (b) (iv)</b>	• Neither consolidated nor deducted.	
<b>Own Funds - Requirements regarding the own funds table</b>		<b>Section</b>
<b>437 (1) (a)</b>	A full reconciliation of Common Equity Tier 1 items, Additional Tier 1 items, Tier 2 items and filters and deductions applied pursuant to Articles 32 to 35, 36, 56, 66 and 79 to own funds of the institution and the balance sheet in the audited financial statements of the institution;	<a href="#">3.3</a>
<b>437 (1) (b)</b>	a description of the main features of the Common Equity Tier 1 and Additional Tier 1 instruments and Tier 2 instruments issued by the institution	<a href="#">3.2</a>
<b>437 (1) (c)</b>	the full terms and conditions of all Common Equity Tier 1, Additional Tier 1 and Tier 2 instruments	<a href="#">3.2</a>
<b>437 (1) (d) (ii)</b>	each deduction made pursuant to Articles 36, 56 and 66	<a href="#">3.1</a>
<b>437 (1) (d) (iii)</b>	items not deducted in accordance with Articles 47, 48, 56, 66 and 79	<a href="#">3.1</a>
<b>Capital Requirements</b>		<b>Section</b>
<b>438(a)</b>	Summary of institution's approach to assessing the adequacy of its internal capital	<a href="#">4.2</a>
<b>438(c)</b>	Capital requirement amounts for credit risk for each Standardised approach exposure class (8% of risk-weighted exposure).	<a href="#">5.1</a>
<b>438(e)</b>	Capital requirements amount for position risk, FX risk, settlement risk, commodities risk	<a href="#">5.5</a>
<b>438(e)</b>	Capital requirements amount for large exposures exceeding limits	<a href="#">7.1</a>
<b>438(f)</b>	Capital requirements for the Basic Indicator approach, the Standardised approach, and the Advanced Measurement approach as applicable and disclosed separately.	<a href="#">5.6</a>
<b>Exposure to counterparty credit risk (CCR)</b>		<b>Section</b>
<b>439(a)</b>	Discussion of the methodology used to assign internal capital and credit limits for counterparty credit exposures.	<a href="#">5.4</a>
<b>439(b)</b>	Discussion of policies for securing collateral and establishing reserves.	<a href="#">5.4</a>

<b>439(c)</b>	Discussion of policies with respect to wrong-way exposures.	<a href="#">5.4</a>
<b>439(d)</b>	A discussion of the impact of the amount of collateral the institution would have to provide given a downgrade in its credit rating	<a href="#">5.4</a>
<b>439(e)</b>	Gross positive fair value of contracts, netting benefits, netted current credit exposure, collateral held and net derivatives credit exposure	<a href="#">5.4</a>
<b>439(f)</b>	Exposure values under mark-to-market, original exposure, standardised and internal model methods.	<a href="#">5.4</a>
<b>439(g)</b>	Notional value of credit derivative hedges and the distribution of current credit exposure by type of exposure.	<a href="#">5.4</a>
<b>439(h)</b>	Notional amounts of credit derivative transactions for own credit portfolio, as well as in its intermediation activities, including the distribution of the credit derivatives products used, broken down further by protection bought and sold within each product group	<a href="#">5.4</a>
<b>Capital buffers</b>		<b>Section</b>
<b>440(1)(b)</b>	Disclose the amount of its institution specific countercyclical capital buffer	<a href="#">1.4.4</a>
<b>Capital buffers</b>		<b>Section</b>
<b>442(a)</b>	Definitions for accounting purposes of ‘past due’ and ‘impaired’.	<a href="#">5.1.1</a>
<b>442(b)</b>	Approaches for determining specific and general credit risk adjustments.	<a href="#">5.1.1</a>
<b>442(d)</b>	Geographical distribution of exposures, broken down in significant areas by material exposure classes	<a href="#">5.1.3</a>
<b>442(e)</b>	The distribution of the exposures by industry or counterparty type, broken down by exposure classes, including specifying exposure to SMEs	<a href="#">5.1.4</a>
<b>442(f)</b>	The residual maturity breakdown of all the exposures, broken down by exposure classes	<a href="#">5.1.5</a>
<b>Use of ECAI’s</b>		<b>Section</b>
<b>444(a)</b>	Names of the nominated ECAIs used in the calculation of Standardised approach RWAs, and reasons for any changes.	<a href="#">5.2</a>
<b>444(b)</b>	Exposure classes for which ECAI is used	<a href="#">5.2</a>
<b>444(c)</b>	Description of the process used to transfer the issuer and issue credit assessments onto items not included in the trading book;	<a href="#">5.2</a>
<b>444(d)</b>	Mapping of external rating to credit quality steps.	<a href="#">5.2</a>
<b>444(e)</b>	Exposure values pre- and post-credit risk mitigation, by credit quality step.	<a href="#">5.2</a>
<b>Exposure to market risk</b>		<b>Section</b>
<b>445</b>	Disclosure of position risk, large exposures exceeding limits, FX, settlement and commodities risk.	<a href="#">5.5</a>
<b>Operational Risk</b>		<b>Section</b>
<b>446</b>	Disclosure of the scope of approaches used to calculate	<a href="#">5.6</a>

	operational risk, discussion of internal and external factors considered in the case of advanced measurements approach.	
<b>Exposure to interest rate risk on positions not included in the trading book</b>		<b>Section</b>
<b>448(a)</b>	Nature of interest rate risk and key assumptions and frequency of measurement	<a href="#">5.5.4</a>
<b>Remuneration Disclosures</b>		<b>Section</b>
<b>450(1)(a)</b>	Information concerning the decision-making process used for determining the remuneration policy	<a href="#">8.1</a>
<b>450(1)(b)</b>	Information on link between pay and performance	<a href="#">8.2</a>
<b>450(1)(c)</b>	The most important design characteristics of the remuneration system	<a href="#">8.2</a>
<b>450(1)(d)</b>	The ratios between fixed and variable remuneration	<a href="#">8.1</a>
<b>450(1)(e)</b>	Information on the performance criteria on which the entitlement to shares, options or variable components of remuneration is based	<a href="#">8.3</a>
<b>450(1)(f)</b>	The main parameters and rationale for any variable component scheme and any other non-cash benefits	<a href="#">8.1</a>
<b>450(1)(g)</b>	Aggregate quantitative information on remuneration, broken down by business area	<a href="#">8.1</a>
<b>450(1)(h)(i)</b>		
<b>450(1)(h)(ii)</b>		
<b>450(1)(h)(iii)</b>	Aggregate quantitative information on remuneration, broken down by senior management and members of staff whose actions have a material impact on the risk profile of the institution	<a href="#">8.3</a>
<b>450(1)(h)(iv)</b>		
<b>450(1)(h)(v)</b>		
<b>450(1)(h)(vi)</b>		
<b>450(1)(i)</b>	The number of individuals being remunerated €1 million or more per financial year, for remuneration between €1 million and €5 million broken down into pay bands of €500.000 and for remuneration of €5 million and above broken down into pay bands of €1 million	<a href="#">8.3</a>
<b>450(2)</b>	For institutions that are significant in terms of their size, internal organisation and the nature, scope and the complexity of their activities, the quantitative information shall also be made available to the public at the level of the members of the management body of the institution.	<a href="#">8.3</a>
<b>Leverage</b>		<b>Section</b>
<b>451(1)</b>	Disclose the leverage ratio and breakdown of total exposure measure, including reconciliation to financial statements, and derecognised fiduciary items.	<a href="#">6</a>
<b>451(1) (c)</b>		
<b>451(1) (d)</b>	Description of the risk management process to mitigate excessive leverage and factors that had an impact on the leverage ratio during the year.	<a href="#">6</a>
<b>451(1) (e)</b>	a description of the factors that had an impact on the leverage ratio during the period to which the disclosed	<a href="#">6</a>

---

 leverage ratio refers.

Use of Credit Risk mitigation techniques		Section
<b>453(a)</b>	Policies and processes, and an indication of the extent to which the CIF makes use of on- and off-balance sheet netting.	<a href="#">5</a>
<b>453(b)</b>	Policies and processes for collateral valuation and management.	<a href="#">5</a>
<b>453(c)</b>	Description of the main types of collateral taken by the institution	<a href="#">5</a>
<b>453(e)</b>	Information about market or credit risk concentrations within the credit mitigation taken.	<a href="#">7.1</a>



## **1. INTRODUCTION**

### **1.1 Information**

The purpose of this document is to disclose information in accordance with the scope of application of the Capital Requirements Directive IV (CRD IV) requirements for **GBE Beteiligungs-Holding GmbH** (hereinafter, the ‘Group’).

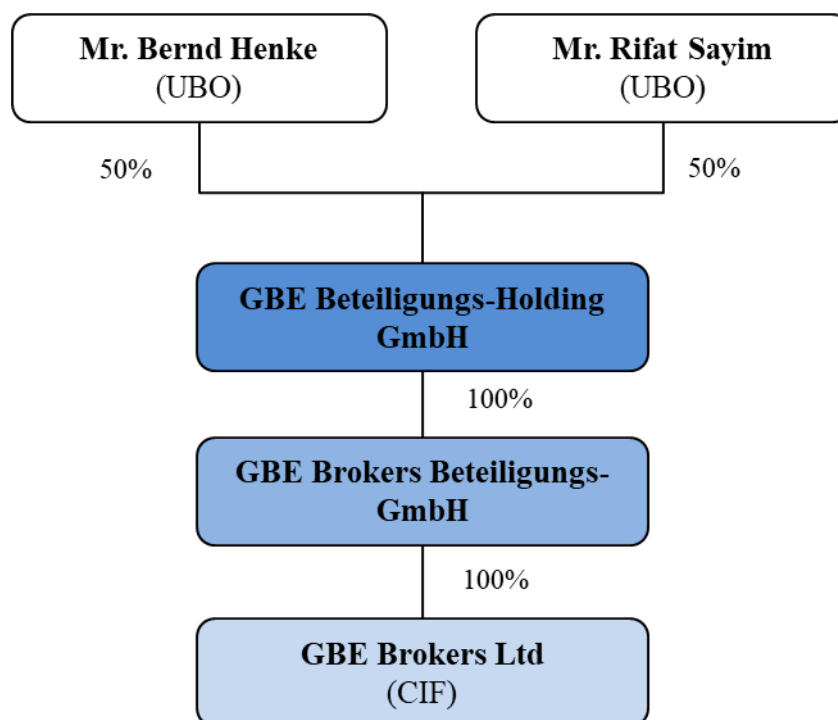
**GBE Beteiligungs-Holding GmbH Ltd** was incorporated in the Germany with registration number HRB 187059 and it is the parent company of **GBE brokers Beteiligungs-GmbH** which was incorporated in Germany with registration number HRB 187941 and indirect parent of **GBE Brokers Ltd** (the “CIF”) which was incorporated in the Republic of Cyprus on 5 August 2013 with registration number HE 324205 and licensed by the Cyprus Securities and Exchange Commission (hereinafter the “CySEC”) with number CIF 240/14 .

Moreover, pursuant to the Regulation (EU) 575/2013 (the “Regulation” or “CRR”), the Group’s minimum/initial capital requirement is **€730k**.

### **1.2. Scope of application**

The Pillar III disclosures Report (the ‘Report’) is prepared on a consolidated basis in accordance with the Pillar 3 disclosure requirements as laid out in Part Eight of the CRR and have as a starting point the financial information used in the Company’s Financial Statements which are prepared in accordance with the International Financial Reporting Standards (“IFRS”). As the two documents serve different purposes, the reported figures illustrate differences, which lie on the differences of the fundamental concepts between the CRR and the IFRS. The regulatory exposure classes are based on different criteria from accounting asset types and are therefore not comparable on a line-by-line basis. Moreover, through financial statements, a company aims to provide the value of all on-balance sheet items at a given point in time, whereas regulatory exposures entail an element of risk which is taken into consideration during the calculation and determination of the said exposures.

The basis of consolidation of the Group entities for accounting and prudential purposes is presented in the Group Structure below:



The subsidiary companies, their activities and their consolidation method as at 31 December 2020 are presented in the table below.

**Table 1: Basis of Consolidation of Group entities for regulatory purposes**

Name of the entity	Method of accounting consolidation	Method of regulatory consolidation	Description of the entity
GBE Brokers Beteiligungs GmbH	Full consolidation	Full consolidation	Financial Holding
GBE brokers Ltd	Full consolidation	Full consolidation	Investment Firm

### 1.3. Pillar III Regulatory Framework

#### 1.3.1. Overview

This Report has been prepared in accordance with Section 4 (Paragraph. 32) of the Directive for the prudential supervision of investment firms which implements the Regulation and the CRD IV, as well as the relevant provisions of new Law 87(I)/2017 (hereinafter, the “Law”), as amended.

The CRR establishes the prudential requirements for capital, liquidity and leverage that entities need to abide by. Furthermore, CRR introduces significant changes in the prudential regulatory regime applicable to institutions including amended minimum capital ratios, changes to the definition of capital and the calculation or risk weighted assets and the introduction of new measures relating to leverage, liquidity and funding. Additionally, CRR is immediately binding on all EU member states. CRD IV governs access to internal governance arrangements including remuneration, Board of Directors (the “Board” of “BoD”) composition and transparency.

The Regulatory framework consists of a three “Pillar” approach:

- **Pillar I** - Establishes minimum capital requirements, defines eligible capital instruments, and prescribes rules for calculating RWA for credit risk, market risk and operational risk.
- **Pillar II** – Requires firms and supervisors to take a view on whether a firm should hold additional capital against: risks considered under Pillar I that are not fully captured by the Pillar I process (e.g. credit concentration risk), risks not taken into account by the Pillar I process (e.g. interest rate risk in the banking book, business and strategic risk) and factors external to the firm (e.g. business cycle effects). Pillar II connects the regulatory capital requirements to the Internal Capital Adequacy Assessment Process (“ICAAP”) and to the reliability of its internal control structures. The function of Pillar II is to provide communication between supervisors and institutions on a continuous basis and to evaluate how well the institutions are assessing their capital needs relative to their risks. If a deficiency arises, prompt and decisive action is taken to restore the appropriate relationship of capital to risk.
- **Pillar III** - Market Discipline requires the disclosure of information regarding the risk management policies of the Group, as well as the results of the calculations of minimum capital requirements, together with concise information as to the composition of original own funds.

### **1.3.2. Disclosure Policy: Basis and Frequency of Disclosure / Location and verification**

The Group has a formal policy, approved by the Board, which details its approach in complying fully with the Pillar 3 disclosure requirements as laid out in Part Eight of the CRR. According to the Directive, the risk management disclosures should be included in either the financial statements if these are published, or on their websites.

The Pillar III disclosure requirements are contained in Articles 431 to 455 of the Regulation. In addition, these disclosures must be verified by the external auditors of the Group and the Group is responsible to submit the external auditors’ verification report to CySEC. The Group has included its risk management disclosures as per the Directive on its website as it does not publish its financial statements.

As per the Article 432(1) of the CRR, institutions may omit one or more disclosures, if such disclosures are not regarded as material, except for the following disclosures:

- Regarding the policy on diversity with regard to selection of members of the management body, its objectives and any relevant targets set out in that policy, and the extent to which these objectives and targets have been achieved (*Article 435 (2) (c)* of CRR).
- Own funds (*Article 437* of CRR).
- Remuneration policy (*Article 450* of CRR).

Materiality is based on the criterion that the omission or misstatement of information would be likely to change or influence the decision of a reader relying on that information for the purpose of making economic decisions. Where the Group has considered a disclosure to be immaterial, this was not included in the document.

## Disclosures and Confidential Information

The Regulation also provides that institutions may omit one or more disclosures, if such disclosures are regarded as confidential or proprietary. The CRR defines proprietary as if sharing that information with the public would undermine its competitive position. It may include information on products or systems which, if shared with competitors, would render an institution's investments therein less valuable.

Information is regarded as confidential if there are obligations to customers or other counterparty relationships binding the institution to confidentiality. Under the light of the above, the Group avoided to disclose such confidential information in this report.

## Frequency

The Group's policy is to publish the disclosures required on an annual basis. The frequency of disclosure will be reviewed should there be a material change in approach used for the calculation of capital, business structure or regulatory requirements.

## Medium and location of publication

Institutions may determine the appropriate medium, location and means of verification to comply effectively with the disclosure requirements. In this respect, the Pillar III disclosures are published on:

- [www.gbebrokers.com](http://www.gbebrokers.com)
- [www.gbeprime.com](http://www.gbeprime.com)

## Verification

The Pillar III disclosures are subject to internal review and validation prior to being submitted to the Board for approval. The Pillar III disclosures have been reviewed and approved by the Board. In addition, the Remuneration disclosures have been reviewed by the Risk Manager.

### 1.4. Risk management objectives and policies

To ensure effective risk management, the Group has adopted the Three Lines of Defence model, with clearly defined roles and responsibilities.

First Line of Defence: Managers are responsible for establishing an effective control framework within their area of operation and identifying and controlling all risks so that they are operating within the organisational risk appetite and are fully compliant with policies and where appropriate defined thresholds. First Line of Defence acts as an early warning mechanism for identifying (or remedying) risks or failures.

Second Line of Defence: The Risk Management Function is responsible for proposing to the Board appropriate objectives and measures to define the risk appetite and for devising the suite of policies necessary to control the business including the overarching framework and for independently monitoring the risk profile, providing additional assurance where required. The Risk Management Function will leverage their expertise by providing frameworks, tools and techniques to assist management in meeting their responsibilities, as well as acting as a central coordinator to identify enterprise wide risks and make recommendations to address them.

Integral to the mission of Second Line of Defence is identifying risk areas, detecting situations/activities, in need of monitoring and developing policies to formalise risk assessment, mitigation and monitoring.

Third Line of Defence: Comprises by the Internal Audit Function which is responsible for providing assurance to the Board on the adequacy of design and operational effectiveness of the systems of internal controls. Internal Audit undertakes on-site inspections/visits to ensure that the responsibilities of each Function are discharged properly (i.e. soundly, honestly and professionally) as well as reviews the relevant policies and procedures. Internal Audit works closely with both the First and Second Lines of Defence to ensure that its findings and recommendations are taken into consideration and followed, as applicable.



#### 1.4.1. Risk Management Framework

Managing risk effectively in a Group operating in a continuously changing risk environment requires a strong risk management culture. As a result, the Group has established an effective risk oversight structure and the necessary internal organisational controls to ensure that the Group undertakes the following:

- The adequate risk identification and management
- The establishment of the necessary policies and procedures
- The setting and monitoring of the relevant limits and
- Compliance with the applicable legislation

The Board meets on a regular basis, and receives updates on risk and regulatory capital matters from management. The Board reviews regularly (at least annually) written reports concerning compliance, risk management and internal audit policies, procedures and work as well as the Group's risk management policies and procedures as implemented by Management.

As part of its business activities, the Group faces a variety of risks, the most significant of which are described further below. The Group holds regulatory capital against three all-encompassing main types of risk: credit risk, market risk and operational risk.

**Recovery Plan**

CySEC has issued the Circular C351 on 05 February 2020 in order to provide guidance to Full Scope CIFs with respect to the 'Preparation and Submission of Recovery Plans by CIFs', fall within the scope of Law 20(I)/2016.

As per section 5(1) of the Law 20(I)/2016, certain institutions should be subject to simplified obligations in relation to recovery planning. CySEC published its Directive (Directive DI20-01) stating the criteria for CIFs to determine whether a CIF falls under simplified or full scope obligations in regard to recovery planning. Moreover and according to paragraph 4 of the Directive DI20-01, CIFs that fulfil the simplified obligations criteria for the purpose of preparing their recovery plans, shall draw a recovery plan which shall include at least the content and details referred to in Form 20-01 and submit the relevant Form to CySEC every two years by 30 September at the latest.

According to the latest available Audited Financial Statements, the CIF is subject to the simplified obligations and as such has complied with the said reporting obligation by submitting the Form 20-01 to CySEC by 30 September 2020. The CIF will update the contents of the Form and submit it to CySEC by 30 September 2022.

**Resolution Plan**

The Central Bank of Cyprus ('CBC') acting as the National Resolution Authority for all credit institutions and Cyprus Investment Firms (CIFs) pursuant to 22(I)/2016 is responsible for drafting of resolution plans of the aforementioned entities. For the purpose of preparation and implementation of the resolution plans, the CIF was requested by CBC to submit the information set out in Annex I of the Regulation 2018/1624 ('CIR'), by 30 April each year with reference date 31st December of the previous year.

The CIF is required to submit the relevant 2021 Data Collection templates with reference period the year 2020 to CBC in XBRL format. Furthermore, and as per the Article 7 of the CIR, the CIF is also required to submit additional information in excel format each year with reference date the end of previous calendar year. Both submissions shall be made via EDX platform of the CBC by 30 April 2021.

In this respect, the CIF shall ensure that the resolutions templates and the additional information template will be completed and submitted in XBRL format and excel format respectively, via EDX platform by the designated deadline.

**1.4.2. Risk Statement**

The Group's activities expose it to a variety of risks, and in particular to credit risk, market risk, operational risk, compliance risk, regulatory risk, reputational risk, group risk, strategic risk, liquidity risk, conduct risk etc. The Group, through its operations, has significant exposure to the economies and financial markets.

Even though the global economy has recorded growth in the latest year after overcoming the latest economic recession, the overall future economic outlook of the economy remains unstable due to the recent developments on the outbreak of Coronavirus (COVID-19).



Following the outbreak of COVID-19 in Cyprus, the Firm has taken the required measures to ensure that its employees have access to its technology infrastructures necessary for the completion of their tasks and that additional system for critical functions are being provided. In this respect, the Business Continuity Plan has been amended accordingly. Moreover, the Group is closely monitoring the impact of COVID-19 on its financial position in order to be able to take proactive measures.

### **Risk Strategy**

The risk strategy of the Group is the responsibility of the Board, which formulates it and is responsible for monitoring its implementation. This is achieved through the development of risk management processes and procedures as well as through an assessment of the risks undertaken and the effectiveness of the risk management framework, given the Group's business model. One important characteristic of the Group's risk strategy is the alignment with the strategic and operational targets that are set by the Board. The risks that arise from the implementation of the Group's strategic and business plans are regularly analysed in order to ensure the adequacy of the relevant policies, procedures and systems.

Following the outbreak of COVID-19 in Cyprus, the Group is following the local government guidelines in its response to the virus. During the year 2020, the Group concentrated their efforts on monitoring and assessing the impact of the COVID-19 as well as ensuring business continuity. In this respect, it has taken the required measures to ensure that its employees have access to its technology infrastructures necessary for the completion of their tasks and that additional system for critical functions are being provided, as per the updated Business Continuity Plan.

### **Risk Appetite**

Risk appetite is the level and type of risk a firm is able and willing to assume in its exposures and business activities, given its business objectives and obligations to stakeholders. Risk appetite is generally expressed through both quantitative and qualitative means and should consider extreme conditions, events and outcomes. In addition, risk appetite should reflect potential impact on earnings, capital and funding/liquidity.

The Group has a low-risk appetite in respect to investing and to managing business and operational activities.

According to Financial Stability Board (FSB) an appropriate risk appetite framework (RAF) should enable risk capacity, risk appetite, risk limits, and risk profile to be considered for business lines and legal entities as relevant, and within the group context. The Risk appetite framework is defined as the overall approach, including policies, processes, controls, and systems through which risk appetite is established, communicated, and monitored. It includes a risk appetite statement, risk limits, and an outline of the roles and responsibilities of those overseeing the implementation and monitoring of the RAF. The RAF should consider material risks to the financial institution, as well as to the institution's reputation vis-à-vis policyholders, depositors, investors and customers. The RAF aligns with the institution's strategy.

The Group is assessing its risk appetite in respect to investing and to managing business and operational activities while the Risk Appetite Statement is prepared by the Risk Manager and approved by the Board of Directors.

**Table 2: Risk Appetite areas**

Indicator	Normal <sup>1</sup>	Warning <sup>2</sup>	Limit <sup>3</sup>
Own Funds	≥€3,000	<€3,000k	€730k
Common Equity Tier 1 Ratio <sup>4</sup>	≥10.50%	<10.50%	7.00%
Tier 1 Ratio <sup>4</sup>	≥12.00%	<12.00%	8.50%
Total Capital Ratio <sup>4</sup>	≥14.00%	<14.00%	10.50%
Leverage Ratio	≥5.00%	<5.00%	3.00%
Liquidity Coverage Ratio	≥110.00%	<110.00%	100.00%
Return on Assets	≥5.00%	<5.00%	0.00%
Retained Earnings / Total Equity	≥10.00%	<10.00%	5.00%
Concentration of Funds <sup>5</sup>	≤10.00%	>10.00%	25.00%

**Notes**

1. The level of the indicator is within the acceptable limits as per the Group's risk appetite.
2. The Group should take proactive actions in order to ensure that the level of the indicator will remain above the acceptable limits.
3. The level of the indicator falls below the acceptable limits and as such the Group should proceed with the required actions in order to restore the level of the said indicator to the normal predefined levels.
4. Capital Buffers + ICAAP add-on + 1.50% as per the paragraph 18 of the Law 20(I)/2016 have been taken into consideration for Normal and Warning thresholds.
5. Large exposure on a single counterparty or a group of connected counterparties limit in accordance with Article 392 of CRR i.e. all exposures more than 10% of eligible capital.

The Risk Appetite framework has been designed to create links to the strategic long-term plan, capital planning and the risk management framework.

The Board approves the Group's corporate strategy, business plans, budget, long term plan and ICAAP. The Group employs mitigation techniques defined within the policies, to ensure risks are managed within Risk Appetite.

### 1.4.3. Risk Culture

Risk culture is a critical element in the Group's risk management framework and procedures. Management considers risk awareness and risk culture within the Group as an important part of the effective risk management process. Ethical behaviour is a key component of the strong risk culture and its importance is also continuously emphasised by the management.

The Group is committed to embedding a strong risk culture throughout the business where everyone understands the risks they personally manage and are empowered and qualified to take accountability for them. The Group embraces a culture where each of the business areas is encouraged to take risk-based decisions, while knowing when to escalate or seek advice.

### 1.4.4. Capital Requirements

#### Regulatory Capital Buffers



CRD IV is transposed into national laws, which allows national regulators to impose additional capital buffer requirements. Based on the provisions of the Macroprudential oversight of Institutions Law of 2015 which came into force on 1 January 2016, the Central Bank of Cyprus (the “CBC”) is the designated Authority responsible for setting the macroprudential buffers that derive from the CRD IV.

Further to the above, the Macroprudential Authority has decided to activate the capital conservation buffer (the “CCB”) having exercised its power. The CCB was phased-in gradually, starting from 1 July 2016 at 0.625% and increasing by 0.625% every year thereafter, until being fully implemented (2.5%) on 1 January 2019. The Group is obliged to maintain a 2.5% CCB in addition to the CET1 capital maintained for the year 2020 to meet the own funds requirement imposed by Article 92 of the CRR.

In accordance with the provisions of this law, the CBC sets, on a quarterly basis, the Countercyclical Capital Buffer (the “CCyB”) level in accordance with the methodology described in this law. The CCyB is effective as from 1 January 2016 and is determined by the CBC ahead of the beginning of each quarter. According to paragraph 52(2) of the Directive, the Macroprudential Authority may exempt small and medium sized CIFs from holding an institution specific CCyB, in addition to their CET 1 Capital. However, CySEC with an email dated 25 May 2020 informed the CIFs that CBC decided not to exempt small and medium sized CIFs from the obligation to maintain countercyclical capital buffer. The Group is obligated to maintain an institution specific CCyB equivalent to its total risk exposure amount multiplied by the weighted average of the countercyclical buffer rates. The CBC has set the level of the CCyB rate for Cyprus at 0% for 2020.

At present and following COVID-19 pandemic crisis, the countries that have adopted a positive countercyclical capital buffer rate are as shown in the table below:

**Table 3: Countercyclical Capital Buffer Rate per Country**

Country	Current Rate	
	Date from	CCyB Rate
<b>Bulgaria</b>	01 April 2020	0.50%
<b>Czech Republic</b>	01 July 2020	0.50%
<b>Hong Kong</b>	16 March 2020	1.00%
<b>Luxembourg</b>	01 January 2021	0.50%
<b>Norway</b>	13 March 2020	1.00%
<b>Slovakia</b>	01 August 2020	1.00%

*Source: European Systemic Risk Board & BIS Website – Updated on 15 March 2021*

The institution specific CCyB rate of the Group for 31 December 2020 was zero.

The Macroprudential Oversight of Institutions Law, 2015, also requires the maintenance of additional capital buffer by the systemically important credit institutions and investment firms either at the national level, or at the EU level, referred to as Other Systemically Important Institutions (“O-SII”).

The O-SII capital buffer reflects the cost for an institution of being systemically important and reduces the moral hazard from the support of the institution from the state and the taxpayers and compensates for the higher risk it represents for the national financial system and the

potential consequences of its failure. The Group is not obliged to maintain a O-SII capital buffer as it is not a O-SII institution.

#### **1.4.5. Upcoming Regulatory Changes – IFR & IFD**

The European Parliament on 16 April 2019 has adopted a new, comprehensive regulatory regime for investment firms: the Investment Firm Directive ("IFD") and Investment Firm Regulation ("IFR") are intended to replace the existing applicable regulation for investment firms.

While small and "non-interconnected" firms in particular will benefit from less regulation, the legislation for "systemically relevant" investment firms means no less than equal treatment with credit institutions in the sense of a level playing field – accordingly, they will fall entirely under the previous regulatory framework (i.e. CRR). As a result, all other investment firms will no longer be subject to the CRD/CRR framework, which is primarily intended for banks.

The new regulatory regime applies to ALL investment firms authorised and supervised under the MiFID II. The main regulatory changes in the prudential framework by IFR and IFD:

- a. New Classification of Investment Firms
- b. Initial Capital Requirement and Composition
- c. Capital Requirements (K-Factors)
- d. Concentration Risk Requirement
- e. Liquidity Requirements
- f. Disclosures Requirements
- g. Reporting Requirements

**Other Supervisory Requirements** According to the new prudential regulatory framework the Initial Capital Requirements and classification for investment firms will be amended. Specifically, investment firms will be classified into three different categories (Class 1, Class 2 and Class 3) based on their size and business operations. Moreover, the initial capital requirements will be amended (€750k, €150k and €75k) and it will be decided based on the investment services an entity is authorised to offer.

Further to the above, the regulatory capital ratio requirements will not be applicable anymore and investment firms will be requested to comply with the following at all times:

- a) CET 1 should constitute at least 56% of capital requirements;
- b) Tier 1 should constitute at least 75% of capital requirements;
- c) Tier 1 and Tier 2 should constitute at least 100% of capital requirements

CET1, Tier 1 and Tier 2 will be calculated in accordance with the eligibility criteria of the capital instruments as per the provisions of the CRR.

As regards the capital requirements calculation, Class 1 Investment Firms will continue calculate their overall capital requirements in accordance with the provisions of the existing regulation. However, Class 2 Investment Firms will be requested to maintain own funds of at least the higher between a) Initial Capital, b) K-Factors requirement and c) Fixed Overheads requirement while Class 3 Investment Firms' capital requirements will be calculated as the higher between only a) Initial Capital and b) Fixed Overheads requirement.

K-factors methodology which is applicable for Class 2 Investment Firms will replace the current credit risk, market risk and operational risk approach in order to calibrate the capital needed to meet the risks of the investment firm. Class 3 firms are not required to calculate their capital based on the K-factor formula while they need to calculate the K-factors for categorisation purposes.

Capital requirement from applying K-factors formula (pursuant to Article 15 of the IFR) is the sum of Risk to Customer (RtC), Risk to Market (RtM) and Risk to Firm (RtF). The K-Factors are calculated as shown below:

**Table 4: K-Factors as per IFR&IFD**

Risk to Client (RtC)	Risk to Market (RtM)	Risk to Firm(RtF)
<b>Sum of:</b> <ul style="list-style-type: none"> <li>• K-AUM: Assets Under Management</li> <li>• K-ASA: Client Assets Safeguarded and Administered</li> <li>• K-CMH: Client Money Held</li> <li>• K-COH: Client Orders Handled</li> </ul>	<b>Higher of:</b> <ul style="list-style-type: none"> <li>• K-NPR: Net Position Risk (calculated in accordance to CRR) or</li> <li>• K-CMG: Clearing Member Guarantee</li> </ul>	<b>Sum of:</b> <ul style="list-style-type: none"> <li>• K-TCD: Trading Counterparty Default</li> <li>• K-CON: Concentration risk based on large exposures</li> <li>• K-DTF: Operational risks from Daily Trading Flow</li> </ul>

*\*K-AUM, K-ASA, K-CMH, K-COH and K-DTF relate to the volume of activity. The volumes should be multiplied by the corresponding coefficients set out in IFR in order to determine the own fund requirement.*

Further to the above, the CIF has already assessed the requirements under the new prudential regulatory framework and concluded that it will be classified as Class 2 Investment Firm and as such it will be requested to maintain own funds of at least the higher between a) the initial capital requirement, b) the K-Factors requirement and c) Fixed Overheads requirement.

### 1.5. Declaration of the Management Body

The Management Body is required to proceed with an annual declaration on the adequacy of the Group's risk management framework and ensure that the risk management arrangements and systems of financial and internal control in place are in line with the Group's risk profile.

The risk management framework is designed to identify, assess, mitigate and monitor all sources of risk that could have a material impact on the Group's operations. The Board considers that it has in place adequate systems and controls with regard to the Group's size, risk profile and strategy and an appropriate array of assurance mechanisms, properly resourced and skilled, to avoid or minimise loss.

## **2. CORPORATE GOVERNANCE**

The systems of risk management and internal control include risk assessment, management or mitigation of risks, including the use of control processes, information and communication systems and processes for monitoring and reviewing their continuing effectiveness.

The risk management and internal control systems are embedded in the operations of the Group and are capable of responding quickly to evolving business risks, whether they arise from factors within the Group or from changes in the business environment.

### **2.1. The Board of Directors**

The Board has the overall responsibility for the establishment and oversight of the Risk Management Framework. The Board satisfies itself that financial controls and systems of risk management are robust. The number of directorships held by Executive and Non-Executive Directors in the Group do not exceed the maximum number allowed.

The Group has in place the Internal Operations Manual which lays down the activities, processes, duties and responsibilities of the Board, Committees, Senior Management and staff constituting the Group. It also implements and maintains adequate risk management policies and procedures which identify the risks relating to the activities, processes and systems, and where appropriate, set the level of risk tolerated by the Group. The Group adopts effective arrangements, processes and systems, in light of that level of risk tolerance, where applicable.

### **2.2. Number of Directorships held by members of the Board**

The number of directorships which may be held by a member of the Board shall take into account individual circumstances and the nature, scale and complexity of the Group's activities. Unless representing the Republic, members of the Board of a CIF that is significant in terms of its size, internal organisation and the nature, the scope and the complexity of its activities shall not hold more than one of the following combinations of directorships at the same time:

- One executive directorship with two non-executive directorships;
- Four non-executive directorships.

Furthermore, directorships in organisations which do not pursue predominantly commercial objectives such as non-profit or charitable organisations shall not count for the purposes of the above guidelines.

The table below discloses the number of directorships held by members of the management body in entities of the Group as at 31 December 2020.

**Table 5: Number of Directorships held**

Director	Entity Name	Function	Number of Executive Directorships	Number of Non-Executive Directorships
Niklas Neubauer	GBE Brokers Ltd	Executive Director	2	-
Christos Domazos*	GBE Brokers Ltd	Executive Director	1	-
Rifat Sayim	GBE Beteiligungs-GmbH/ GBE Beteiligungs-Holding GmbH	Executive Director	3	-
Andreas Psindros	GBE Brokers Ltd	Non-Executive Director	1	2
Olga Kvasova	GBE Brokers Ltd	Non-Executive Director	-	1

\*The CIF submitted to CySEC on 15 January 2021 a notification about the replacement of Mr. Christos Domazos with Mr. Kyriakos Karoullas for the position of Executive Director.

### 2.3. Policy on Recruitment

Recruitment into the Board combines an assessment of both technical capability and competency skills referenced against the Group's leadership framework. Members of the Board possess sufficient knowledge, skills and experience to perform their duties. The overall composition of the Board reflects an adequately broad range of experiences to be able to understand the Group's activities, including the main risks to ensure the sound and prudent management as well as sufficient knowledge, of the legal framework governing the operations.

### 2.4. Policy on Diversity

The Group is committed to promote a diverse and inclusive workplace at all levels, reflective of the communities in which it does business. It approaches diversity in the broadest sense, recognizing that successful businesses flourish through embracing diversity into their business strategy, and developing talent at every level in the organisation. For this purpose, the Group takes into consideration various aspects such as broad industry experience, knowledge, independence, gender, age, cultural and educational background, for the Board appointments.

### 2.5. Information flow on risk to the management body

Risk information flows up to the Board directly from the business departments and control functions. The Board ensures that it receives on a frequent basis, at least annually written reports regarding Internal Audit, Compliance, Money Laundering and Terrorist Financing and Risk Management issues and approves the ICAAP report as shown in the table below:

**Table 6: Information flow on risk to management body**

No.	Report Name	Owner of Report	Recipient	Frequency
1	Risk Manager's Report	Risk Manager	Senior Management, Board, CySEC	Annually
2	Pillar I – CRDIV CoRep Forms	Risk Manager	Senior Management, Board, CySEC	Quarterly
3	ICAAP (Pillar 2) Report	Risk Manager	Senior Management, Board	Annually
4	Pillar 3 Disclosures	Risk Manager	Senior Management, Board	Annually
5	Risk Register	Risk Manager	Senior Management, Board	Annually
6	Compliance Report	Compliance Officer	Senior Management, Board, CySEC	Annually
7	Internal Audit Report	Internal Auditor	Senior Management, Board, CySEC	Annually
8	Anti-money laundering (AMLCO) Report	Anti-money laundering Compliance Officer	Senior Management, Board, CySEC	Annually
9	Audited Financial Statements	External Auditor	Senior Management, Board, CySEC	Annually
10	Form 144-14-11 'Prudential Supervision Information'	Risk Manager	Senior Management, Board, CySEC	Annually
11	Form 20-01 (Recovery Plan)*	Risk Manager	Senior Management, Board, CySEC	Every Two Years
12	Resolution Templates (XBRL)**	Risk Manager	Senior Management, Board, Resolution Authority (CBC)	Annually

*\*Directive DI20-01 of the Cyprus Securities and Exchange Commission on the establishment of simplified obligations as to the content and details of the recovery plans of CIFs*

*\*\*Starting from the year 2021*

Furthermore, the Group believes that the risk governance processes and policies are of at most importance for its effective and efficient operation. The processes are reviewed and updated on an annual basis or when deemed necessary.

### 3. OWN FUNDS

Own Funds (also referred to as capital resources) is the type and level of regulatory capital that must be held to enable the Group to absorb losses. The Group is required to hold own funds in sufficient quantity and quality in accordance with CRD IV which sets out the characteristics and conditions for own funds.

The Group throughout the year under review managed its capital structure and made adjustments to it in light of the changes in the economic and business conditions and the risk characteristics of its activities.

During the year, the Group complied fully with all capital and liquidity requirements and operated well within the regulatory requirements. The Total Capital Ratio of the Group as at 31 December 2020 was 25.17% which is above the minimum regulatory capital of 10.50% (8% + buffers).

The Group's Combined Buffer Requirement consists of the following:

- Regulatory capital requirement of the level of 8%,
- Capital Conservation Buffer ("CCB") of the level of 2.50%,
- Countercyclical Capital Buffer ("CCyB") of the level of 0.00003%.

#### 3.1. Tier 1 & Tier 2 Regulatory Capital

Institutions shall disclose information relating to their own funds. Furthermore, institutions shall disclose a description of the main features of the Common Equity Tier 1 (CET1) and Additional Tier 1(AT1) instruments and Tier 2 (T2) instruments issued by the institution.

The Group's regulatory capital comprises fully of CET1 capital while it has not issued any AT1 or T2 capital. The composition of the capital base and capital ratios of the Group and its subsidiary are shown in the following table:

**Table 7: Composition of the capital base and capital ratios**

	CIF (Solo) €000	Group (Consolidated) €000
<b>CET1 capital before regulatory adjustments</b>		
Capital instruments and the related share premium accounts	1,016	100
Retained earnings	3,652	6,995
<b>CET1 capital: regulatory adjustments</b>		
Additional deductions of CET1 Capital due to Article 3 of the CRR (ICF Contribution)*	(76)	(76)
<b>CET1 capital</b>	<b>4,502</b>	<b>7,019</b>
<b>AT1 capital</b>	-	-
<b>T1 = CET1 + AT1</b>	<b>4,502</b>	<b>7,019</b>
<b>Tier 2 (T2) capital</b>	-	-
<b>Total capital (TC = T1 + T2)</b>	<b>4,502</b>	<b>7,019</b>



<b>Risk weighted assets</b>	<b>€000</b>	<b>€000</b>
Credit risk	2,038	4,232
Market risk	12,116	12,116
Operational risk	11,180	11,406
Credit Valuation Adjustment risk	132	132
<b>Total risk weighted assets</b>	<b>25,466</b>	<b>27,887</b>
<b>Capital ratios and buffers</b>	<b>%</b>	<b>%</b>
<b>Common Equity Tier 1</b>	<b>17.68%</b>	<b>25.17%</b>
<b>Tier 1</b>	<b>17.68%</b>	<b>25.17%</b>
<b>Total Capital</b>	<b>17.68%</b>	<b>25.17%</b>
<i>Institution specific buffer requirement (CET1 requirement in accordance with article 92 (1)(a) plus capital conservation and countercyclical buffer requirements), expressed as a percentage of risk exposure amount</i>	7.00%	7.00%
<i>of which: capital conservation buffer requirement</i>	2.50%	2.50%
<i>of which: counter cyclical buffer requirement</i>	0.000001%	0.00003%
<b>CET 1 Ratio to meet buffers**</b>	<b>10.68%</b>	<b>18.17%</b>

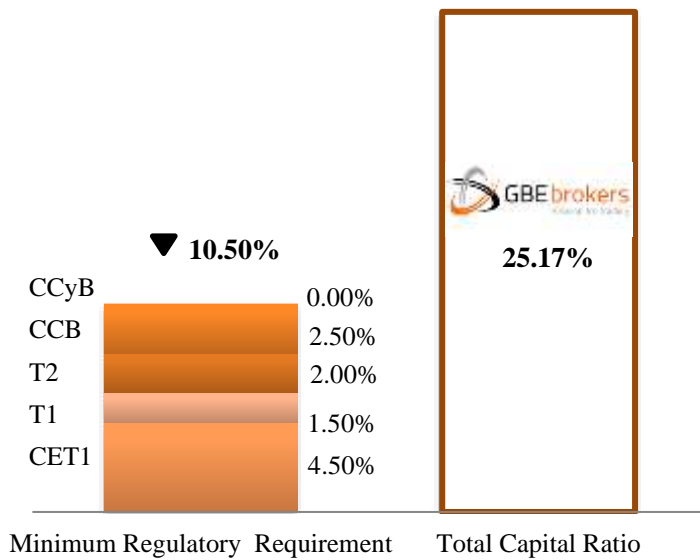
\* According to the Circular C334 (Treatment of the additional cash buffer of Investors Compensation Fund ('ICF') in the own funds calculation), CIFs should deduct the additional Cash Buffer of 3 per thousand of the eligible funds and financial instruments of their clients as at the previous year calculated according to paragraph 11(6) of the Directive DI87-07 (operation of the ICF).

\*\*Common Equity Tier 1 available to meet buffers (as a percentage of risk weighted assets).

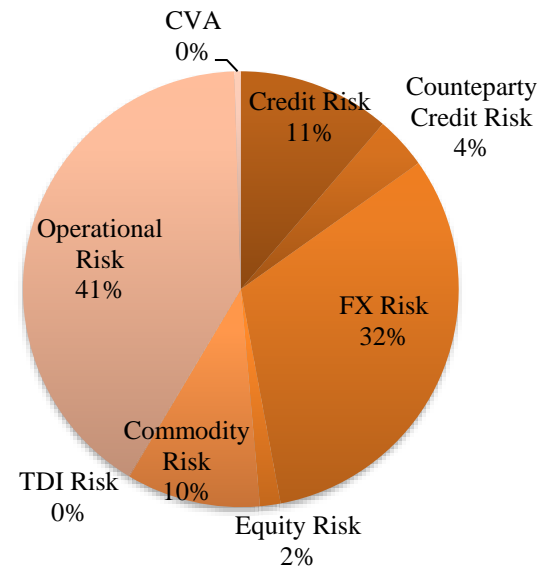
The figures below illustrate the capital requirements and buffers and the risk weighted exposures breakdown for the Group for the year ended 31 December 2020.



### Capital Requirements



### Overall Exposure Breakdown



Further to the above and in light of the upcoming amendments to the prudential regulatory framework (IFR/IFD), the Company has concluded that the Company will be categorised as a Class 2 Investment firm and as such its total capital requirement will be the higher of:

- a) Fixed Overheads Requirement
- b) K-factors requirement
- c) Minimum Initial Capital of €750k

In this respect, the Company has already assessed its capital adequacy position taking into consideration the above new methodology in order to ensure that the appropriate actions will be taken to ensure compliance with the new prudential requirements.

### 3.2. Main features of Common Equity Tier 1, Additional Tier 1 and Tier 2 instruments

In order to meet the requirements for disclosure of the main features of these instruments, the Group discloses the capital instruments' main features as outlined below:

**Table 8: Main features of capital instruments**

Capital Instruments Main Feature	CET1
Issuer	GBE BETEILIGUNGS-HOLDING GMBH
<b>Regulatory Treatment</b>	
Eligible at Solo/(sub-)consolidated/solo	Consolidated
Instrument type	Common Equity
Amount recognized in regulatory capital	€100k
Nominal amount of instrument	€100k
Issue Price	Various
Accounting classification	Shareholders' Equity
Original date of issuance	28 March 2017
Perpetual or dated	Perpetual
Original maturity date	No maturity
Issuer call subject to prior supervisory approval	No
<b>Coupons / Dividends</b>	
Fixed or floating dividend/coupon	Floating
Coupon rate and any related index	N/A

The Group's capital resources consist of CET1 Capital. No additional Tier 1 or Tier 2 capital available.

### 3.3. Balance Sheet Reconciliation

The following table provides a reconciliation of own funds between the consolidated balance sheet, as presented in the Consolidated Financial Statements of the Group, and the financial position of the Group prepared for regulatory purposes.

**Table 9: Balance Sheet Reconciliation**

Equity	€000
Share capital	100
Retained earnings	6,995
<b>Total Equity as per the Audited Financial Statements</b>	<b>7,095</b>
<b>Regulatory Deductions</b>	
Additional deductions of CET1 Capital due to Article 3 of the CRR	(76)
<b>Total Own funds as per the CoRep Forms</b>	<b>7,019</b>

## **4. COMPLIANCE WITH REGULATORY CAPITAL AND THE OVERALL PILLAR II RULE**

### **4.1. Internal Capital**

The purpose of capital is to provide sufficient resources to absorb unexpected losses over and above the ones that are expected in the normal course of business. The Group aims to maintain a minimum risk asset ratio which will ensure there is sufficient capital to support the business during stressed conditions.

### **4.2. Approach to assessing adequacy of Internal Capital**

The Group has adopted the Pillar I plus approach whereby it determines the minimum capital required under Pillar I methodology and subsequently incorporates in that methodology the risks that are either not covered or are partially covered by Pillar I. Initially an assessment is made on the general financial position of the Group both from its financial statements and its Capital Adequacy Returns.

The Pillar I variable capital requirement is the sum of the credit risk and market risk requirements and the operational risk. In order to validate the adequacy of the above requirements under the Pillar I calculations, the ICAAP proceeds with the following individual tests:

- The adequacy of the credit and market risk requirements is assessed with reference to all relevant balance sheet items in order to ascertain if there are additional risks that are not covered by Pillar I
- Other risks connected with the balance sheet, such as liquidity risk and concentration risk, are reviewed in order to establish whether there should be an additional requirement that might not be covered under Pillar I
- The overall capital adequacy is tested by adding together the resulting requirement of the identified risks.
- The absolute impact of combinations of scenarios, including a severe market downturn, is considered in relation to the financial forecasts of the business to assess the potential impact on the capital base over a three year period (forward-looking).
- A comprehensive risk assessment is carried out for all risks, categorizing them under a risk profile by attributing the anticipated impact and likelihood of occurrence.
- Finally, additional measures are set for the mitigation of the identified risks as well as capital allocation.

The ICAAP Report describes how the Group implemented and embedded its ICAAP within its business. The ICAAP also describes the Group's Risk Management framework e.g. the Group's risk profile and the extent of risk appetite, the risk management limits if any, as well as the adequate capital to be held against all the risks (including risks other than the Pillar I risks) faced by the Group.

With regards to the 'use test' the following evidence shall be used to support that the ICAAP is embedded within the Firm:

- Senior management or board challenge, review and sign-off procedures; including any relevant notes in minutes from board and risk committee meetings.
- The extent to which the ICAAP is part of the firm's capital management process, including the extent and use of capital modelling or scenario analysis and stress testing

within the firm's capital management policy. For example, in setting pricing and charges and the level and nature of future business.

In line with the Basel requirements, the key instruments to help the Group maintain adequate capitalization on an ongoing and forward-looking basis are:

- A strategic planning process which aligns risk strategy and appetite with commercial objectives;
- A continuous monitoring process against approved risk and capital targets set;
- Regular risk and capital reporting to management; and
- An economic capital and stress testing framework which also includes specific stress tests to underpin the Group's recovery monitoring processes.

Further to the above and upon the implementation of the new prudential framework (IFR/IFD), the ICAAP report will be reviewed and updated in accordance with the new capital requirements.

## 5. PILLAR I CAPITAL REQUIREMENTS

The following tables show the overall Pillar I minimum capital requirement and risk weighted assets for the Group under the Standardised Approach to Credit Risk, Market Risk and the Basic Indicator Approach for the Operational Risk.

### 5.1. Credit Risk

In the ordinary course of business, the Group is exposed to credit risk, which is monitored through various control mechanisms. Credit risk arises when a failure by counterparties to discharge their obligations could reduce the amount of future cash inflows from financial assets on hand at the balance sheet date.

The Group has policies to diversify risks and to limit the amount of credit exposure to any particular counterparty in compliance with the requirements of the Directive. The Group continuously monitors the fair value calculations, forecast and actual cash flows, and cost budgets so that to ensure that the carrying level of Group's own funds and consequently the Capital Adequacy ratio meet the regulatory requirements at all times.

Trade receivables are shown net of any provision made for impairment. The management believes that no additional credit risk, beyond amounts provided for collection losses, is inherent in the trade receivables. Cash balances are held with high credit quality financial institutions and the Group has policies to limit the amount of credit exposure to any financial institution.

#### 5.1.1. Credit risk adjustments

The Group assesses at the balance sheet date whether there is objective evidence that a financial asset or group of financial assets is impaired. A financial asset or a group of financial assets is impaired and impairment losses are incurred only if there is objective evidence of impairment as a result of one or more events that occurred after the initial recognition of the asset (a "loss event") and that loss event (or events) has an impact on the estimated future cash flows of the financial asset or group of financial assets that can be reliably estimated.

Trade receivables are recognized initially at fair value and are subsequently measured at amortized cost using the effective interest method, less provision for impairment. For those trading receivables that are 90 days or more past due, in non-accrual status, the Group classifies them as "in default", thus an impairment test will emerge. A financial asset is past due if a counterparty has failed to make a payment when contractually due.

Other receivables are recognized initially at fair value and subsequently measured at amortized cost, using the effective interest method, less provision for impairment. A provision for impairment of other receivables is established when there is objective evidence that the Group will not be able to collect all amounts due according to the original terms of receivables. Significant financial difficulties of the debtor, probability that the debtor will enter bankruptcy or delinquency in payments are considered indicators that the trade receivable is impaired. The amount of the provision is the difference between the asset's carrying amount and the present value of estimated future cash flows, discounted at the original effective interest rate. When a receivable is uncollectible, it is written off against the allowance account for other receivables. Subsequent recoveries of amounts previously written off are credited in the statement of

comprehensive income. None of the derivative financial instruments is either past due or impaired.

### IFRS 9 Impairment

IFRS 9 introduced a new model for recognition of impairment losses – the expected credit losses (“ECL”) model. The new rules require that entities will have to record an impairment loss equal to the 12-month ECL for financial assets that have not suffered a significant increase in credit risk since initial recognition. Where there has been a significant increase in credit risk since initial recognition, impairment is measured using lifetime ECL rather than 12-month ECL. Entities must calculate probability of default (“PD”), losses given default (“LGD”) and exposures at default (“EAD”) to estimate expected credit loss provisioning amounts. The model includes operational simplifications for lease and trade receivables which require lifetime losses to be calculated.

The Group has the following types of financial assets that are subject to the expected credit loss model: cash and cash equivalents The Group provides for credit losses against loans to related parties, receivables, other receivables, and cash and cash equivalents. The loss allowance was not reflected on the position as it is the Group's policy not to adjust for immaterial amounts. The first €100.000 has been deducted from the calculation in case of EU banks under the Deposit Guarantee Scheme.

#### 5.1.2. Credit Risk – Risk Weighted Assets

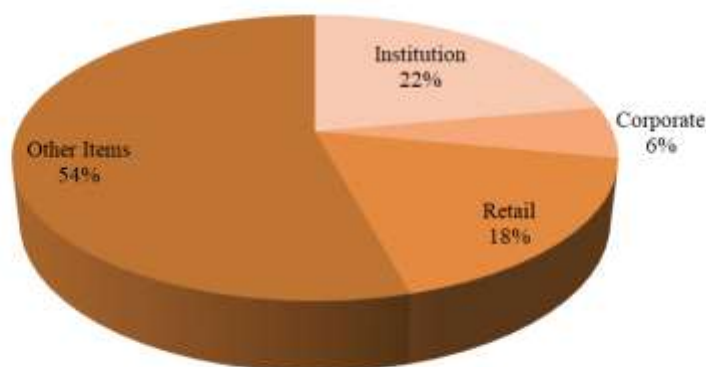
The minimum capital requirement for Credit risk is calculated by exposure using a factor of 8%. The following table shows the risk-weighted exposure amounts and the corresponding minimum capital requirements as at 31 December 2020 for the Group, broken down by exposure class.

**Table 10: Exposure classes as at 31 December 2020**

Exposure class	Risk Weighted Assets	Capital Requirements
	€000	€000
Institutions	936	75
Corporates	248	20
Retail	753	60
Other Items	2,295	184
<b>Total</b>	<b>4,232</b>	<b>339</b>

The Regulation requires disclosure for additional asset classes. These have not been shown in the table above as these are nil as at the reporting period.

### RWA - Breakdown



#### 5.1.3. Credit Risk – Analysis of Average exposures and total amount of exposures after accounting offsets

The Group and its significant subsidiary shall disclose the total amount of exposures after accounting offsets and without taking into account the effects of credit risk mitigation and the average amount of the exposures over the period broken down by different types of exposures as follows:

**Table 11: Analysis of Average Exposures**

Exposure class	Original exposure amount	Average Exposure
	€000	€000
Institutions	5,057	6,196
Corporates	1,639	994
Retail	2,739	1,843
Other Items	2,295	801
<b>Total</b>	<b>11,730</b>	<b>9,833</b>

The Regulation requires disclosure for additional asset classes. These have not been shown in the table above as these are nil as at the reporting period.

#### 5.1.4. Credit Risk – Risk Weighted Assets by Geographical distribution of the exposure classes

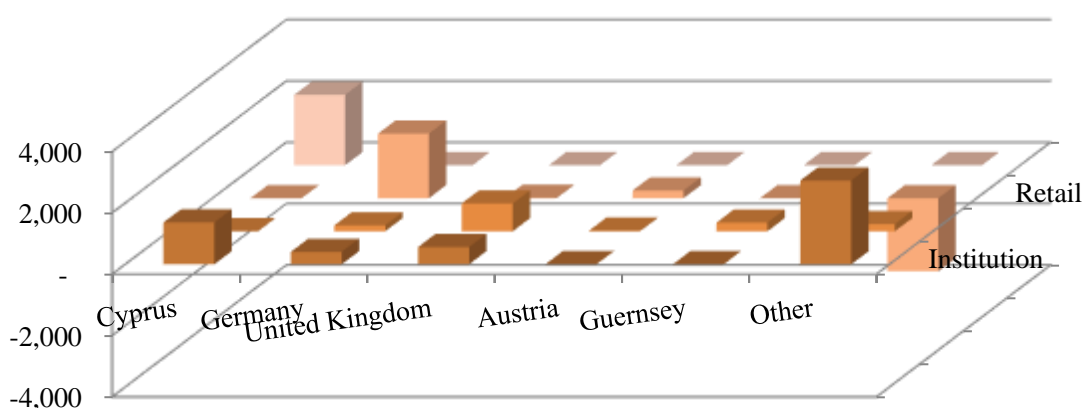
The Group shall disclose the geographical distribution of the exposures, broken down in significant areas by material exposures classes. The geographical distribution of the exposure classes are as follows:

**Table 12: Geographical distribution of the exposure classes**

Exposure class	Cyprus €000	Germany €000	United Kingdom €000	Austria €000	Guernsey €000	Other €000	Total €000
Institutions	1,362	403	561	2,429	-	302	<b>5,057</b>
Corporates	4	194	906	18	283	235	<b>1,639</b>
Retail	1	2,108	15	255	-	360	<b>2,739</b>
Other Items	2,295	-	-	-	-	-	<b>2,295</b>
<b>Total</b>	<b>3,662</b>	<b>2,705</b>	<b>1,481</b>	<b>2,703</b>	<b>283</b>	<b>896</b>	<b>11,730</b>

The Regulation requires disclosure for additional asset classes. These have not been shown in the table above as these are nil as at the reporting period.

### Geographical Distribution of the Exposures



### 5.1.5. Credit Risk – Distribution of exposures by industry

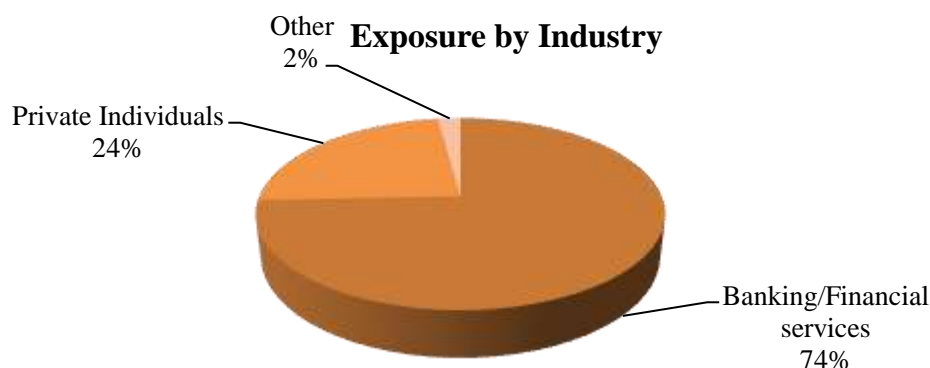
The Group shall disclose the distribution of the exposures by industry or counterparty type, broken down by exposure classes, including specifying exposure to SMEs, and further detailed if appropriate as follows:

**Table 13: Exposures by industry**

Exposure class	Banking/Financial services	Private Individuals	Other	Total
	€000	€000	€000	€000
Institutions	5,057	-	-	<b>5,057</b>
Corporates	1,629	-	10	<b>1,639</b>
Retail	-	2,739	0	<b>2,739</b>
Other Items	0	2,113	183	<b>2,295</b>
<b>Total</b>	<b>6,686</b>	<b>4,852</b>	<b>193</b>	<b>11,730</b>

The Regulation requires disclosure for additional asset classes. These have not been shown in the table above as these are nil as at the reporting period.





### 5.1.6. Residual maturity broken down by exposure classes

The Group shall disclose the residual maturity breakdown of all the exposures, broken down by exposure classes, as follows:

**Table 14: Residual maturity broken down by exposure class**

Exposure Class	Residual Maturity $\leq 3$ months	Residual Maturity $> 3$ months	Total
	€000	€000	€000
Institutions	5,057	-	<b>5,057</b>
Corporates	1,629	10	<b>1,639</b>
Retail	2,739	0	<b>2,739</b>
Other Items	-	2,295	<b>2,295</b>
<b>Total</b>	<b>9,425</b>	<b>2,306</b>	<b>11,730</b>

The Regulation requires disclosure for additional asset classes. These have not been shown in the table above as these are nil as at the reporting period.

### 5.2. Use of ECAIs

The Group shall disclose the names of the nominated External Credit Assessment Institutions (“ECAIs”) and the exposure values along with the association of the external rating with the credit quality steps. The Group uses external credit ratings from Moody’s. These ratings are used for all relevant exposure classes. The general ECAI association with each credit quality step is as follows:

**Table 15: ECAI Association with each credit quality step**

Credit Quality Step	Moody’s Rating	Corporate	Institutions			Sovereign
			Sovereign method	Credit Assessment method		
				Maturity $> 3$ months	Maturity 3 months or less	
1	Aaa to Aa3	20%	20%	20%	20%	0%
2	A1 to A3	50%	50%	50%	20%	20%
3	Baa1 to Baa3	100%	100%	50%	20%	50%
4	Ba1 to Ba3	100%	100%	100%	50%	100%
5	B1 to B3	150%	100%	100%	50%	100%
6	Caa1 and below	150%	150%	150%	150%	150%

Exposures to unrated institutions are assigned a risk weight according to the credit quality step to which exposures to the central government of the jurisdiction in which the institution is incorporated, as specified in Article 121 of CRR.

Notwithstanding the general treatment mentioned above, short term exposures to institutions could receive a favourable risk weight of 20% if specific conditions are met.

The Other Items category includes tangible assets, debtors and prepayments risk weighted at 100%, cash items in the process of collection risk weighted at 20% and cash in hand risk weighted at 0%.

Exposures to corporate clients were risk weighted by 100% risk factor since they were all unrated and were incorporated in countries with no credit rating or with credit assessment up to credit quality step 5.

**Table 16: Breakdown of exposures by asset class and risk weight under the Standardised approach**

Exposure Class	Risk Weight				Total	Of which unrated
	0%	20%	75%	100%		
	€000	€000	€000	€000	€000	€000
Corporate	-	-	-	1,639	<b>1639</b>	1639
Institutions	-	5,057	-	-	<b>5057</b>	1823
Retail	-	-	2,739	-	<b>2739</b>	2739
Other Items	0	-	-	2,295	<b>2295</b>	2295
<b>Total</b>	<b>0</b>	<b>5,057</b>	<b>2,739</b>	<b>3,934</b>	<b>11,730</b>	<b>8,496</b>

The table below presents exposure values before and after credit risk mitigation of the Group, corresponding to Credit Quality Steps (CQS). The values before credit risk mitigation represent the initial exposure value net of value adjustments while the values after credit risk mitigation represent exposures taking into account the eligible financial collateral funded and unfunded credit protection.

**Table 17: Exposures before and after credit risk mitigation as at 31 December 2020**

Credit Quality Step	Exposure values before credit risk mitigation €000	Exposure values after credit risk mitigation €000
CQS 2	2,429	2,429
CQS 4	805	805
Unrated	8,496	4,994
<b>Total</b>	<b>11,730</b>	<b>8,229</b>

### 5.3. Securitisations

The Group is not an active participant in the origination of securitisations (meaning pooled assets with tranching risk), and accordingly detailed Pillar III disclosures are not made.

## 5.4. Counterparty Credit Risk

Counterparty Credit Risk (“CCR”) may be defined as the risk that the counterparty to a transaction could default before the final settlement of the transaction's cash flows. Such transactions relate to contracts for financial derivative instruments, repurchase agreements and long settlement transactions.

The Group takes margin cash deposits as funded credit protection (collateral) for derivatives and uses the Financial Collateral Comprehensive Method for calculation of the funded credit protection.

The Group’s counterparty credit risk as at 31 December 2020 was €353k. The table below shows the analysis of CCR by exposure type:

**Table 18: Counterparty Credit Risk broken down by contract type as at 31 December 2020**

Type of contract	Positive Fair Value	Negative Fair Value	Notional Value	Exposure Amount before CRM	Exposure Amount after CRM	Risk Weighted Assets	Capital Requirements
	€000	€000	€000	€000	€000	€000	€000
Interest rate	-	(0)	0	-	-	-	-
FX rates & Gold	453	(2,409)	167,425	2,127	755	421	34
Equities	186	(718)	38,577	2,501	703	537	43
Precious metals except gold	81	(23)	6,106	509	237	117	9
Commodities other than precious metals	30	(47)	398	70	10	8	1
<b>Total</b>	<b>751</b>	<b>(3,197)</b>	<b>212,506</b>	<b>5,207</b>	<b>1,706</b>	<b>1,082</b>	<b>87</b>

### Counterparty Policies with respect to wrong-way risk exposures

Wrong-way risk occurs when the exposure to a particular counterparty is positively correlated with the Probability of Default (‘PD’) of the counterparty itself or where there is an adverse correlation between counterparty’s PD and the mark-to-market value of the underlying transaction. A wrong-way trading situation can be defined as the condition where the exposure to the counterparty increases, while the counterparty’s financial situation and its ability to pay on the transaction diminishes.

As part of the credit review process, basic assumptions are established regarding correlations for a given trading product.

The management of wrong-way risk is integrated within the Group’s overall credit risk assessment approach and is subject to a framework for identification and treatment of wrong-way risk, which includes governance, processes, roles and responsibilities, methodology, scenarios, reporting, review and escalation.

A conservative treatment for the purpose of calculating exposure profiles is applied to material trades with wrong-way risk features. The wrong-way risk framework applies to OTC, securities financing transactions and centrally cleared trades. If material correlation is identified, the collateral is deemed ineligible for regulatory risk calculations and risk is measured on an uncollateralised basis.

The risk is not currently measured as it is not anticipated to be significant given the existence of cash collateral/margin for almost all derivative transactions, which significantly reduces Counterparty Credit Risk.

## 5.5. Market Risk

Market risk can be defined as the risk of losses in on and off-balance sheet positions arising from adverse movements in market prices. From a regulatory perspective, market risk stems from all the positions included in banks' trading book as well as from commodity and foreign exchange risk positions in the whole balance sheet.

As per the requirements of the Regulation, the Group shall disclose the own funds requirements for Market Risk exposures.

The Group benefits from a number of factors that reduce the volatility of its revenue and protect it from significant changes in market conditions such as its product range. This diversification leads to a significant reduction in the Group's exposure to price risk. The Group's exposure to risk price at any point in time depends primarily on short-term market conditions and client activities during the trading day, hence the exposure at each reporting date may not be representative of the price risk exposure faced by the Group over the year.

The following table discloses the Group's market risk as 31 December 2020

**Table 19: Market Risk Exposure**

Market Risk Weighted Assets	€000
Traded Debt Instruments	22
Equity	427
Foreign Exchange	8,894
Commodities*	2,773
<b>Total Market Risk Exposure</b>	<b>5,145</b>
<b>Total Market Risk Requirements</b>	<b>969</b>

\*Crypto assets are treated as commodities instruments as per the provision of Circular C417

### 5.5.1. Foreign Exchange Risk

The Group's reporting currency is Euro. Foreign currency risk arises when future commercial transactions and recognized assets and liabilities are denominated in a currency that is not the Group's functional currency.

The Group is exposed to Foreign currency risk arising from various currency exposures. Furthermore, funds deposited by clients may not always be maintained in the originally deposited currency but may instead be converted to other currencies on the basis of the

management's decisions. This may expose the Group to Foreign currency risk. The Group's management monitors the exchange rate fluctuations on a continuous basis and acts accordingly.

If the sum of the Group's overall net foreign-exchange position and its net gold position exceeds 2% of its total own funds, the Group calculates own funds requirements for foreign exchange risk. The own funds requirement for foreign exchange risk is the sum of its overall net foreign-exchange positions and its net gold position in the reporting currency, multiplied by 8%.

The foreign exchange risk in the Group is effectively managed by setting and controlling foreign exchange risk limits, such as through the establishment of maximum value of exposure to a particular currency pair.

The Group's foreign exchange risk capital requirement is €711k based on the latest relevant calculations of the Group's capital requirements, as at 31<sup>st</sup> of December 2020.

### Closely Correlated Currencies

Following the EBA's Final draft Implementing Technical Standards on Closely Correlated Currencies under Article 354 (3) of CRR, the Group may apply lower own funds requirements against positions in relevant closely correlated currencies as those are disclosed by EBA. In this respect, for the calculation of the foreign exchange risk for matched positions on closely correlated currencies, a capital requirement of 4% instead of 8% is used.

The Group's matched positions in closely correlated currencies for the period up to 31 December 2020 were €1,368k. In this respect, please find below the analysis of the Group's exposure to Foreign Exchange Risk as at 31 December 2020:

**Table 20: Foreign Exchange Risk**

	Net Positions		2% total own funds	Positions Subject To Capital Charge			Own Funds Requirements	Total Risk Exposure Amount
	Long	Short		Long	Short	Matched		
<b>TOTAL POSITIONS</b>	<b>16,107</b>	<b>8,653</b>	<b>140</b>	<b>925</b>	<b>13,666</b>	<b>1,368</b>	<b>711</b>	<b>8,894</b>
Currencies closely correlated	9,980	7,749		-	6,381	1,368	55	
of which: reporting currency	8,612	-		-	-			
All other currencies	5,202	904		-	7,285		583	
Gold	925	-		925	-		74	

### 5.5.2. Position Risk

The position risk is the risk involved with a certain trading position, commonly incurred due to the changes in price. The CIF calculates its capital requirements for position risk as the sum of the own funds requirements for the general and specific risk of its positions in debt and equity instruments.

## Equities

Equity Risk is the risk that the fair value of a financial instrument fluctuates as a result of changes in market prices other than due to the effect of transactional foreign currency exposures or interest rate risks.

The sum of the absolute values of all the net long positions and all its net short positions is its overall gross position. The CIF calculates, separately for each market, the difference between the sum of the net long and the net short positions. The sum of the absolute values of those differences is its overall net position. The specific risk on this individual equity can be ignored if the stock-index future in question is exchange traded and represents a relevant appropriately diversified index.

The CIF multiplies its overall gross position by 8% in order to calculate its own funds requirement against specific risk. The own funds requirement against general risk are the CIF's overall net position multiplied by 8%

As at 31 December 2020, the market risk capital requirements, due to position risk in equities, amounted to **€427k**.

**Table 21: Capital requirements for position risks in equities**

Equities in Trading Book	Total Exposure €000	Capital requirements €000
General Risk	326	26
Specific Risk	101	8
<b>Total</b>	<b>427</b>	<b>34</b>

## Traded Debt Instruments

Position Risks in Traded Debt Instruments (“TDI”) arising from the investments on Fixed Income instruments such as bonds. The position risk on a traded debt instrument shall be divided into two components in order to calculate the capital required against it:

- a. Specific risk— this is the risk of a price change in the instrument concerned due to factors related to its issuer and
- b. General risk — this is the risk of a price change in the instrument due to a change in the level of interest rates.

Net positions shall be classified according to the currency in which they are denominated and shall calculate the capital requirement for general and specific risk in each individual currency separately. The capital requirement for general market risk for traded debt instruments is calculated under the maturity-based approach. The instruments’ net positions shall be grouped into the three zones (maturity bands) according to the residual time to maturity and whether their coupon is above/below 3%.

As at 31 December 2020, the market risk, due to position risk in traded debt instruments, amounted to **€22k**.

### 5.5.3. Commodities Risk

The risk of the unexpected changes in commodities prices. These commodities are split into precious metals (except gold), base metals, agricultural products and other energy products (oil gas). The CIF calculates its capital requirement with respect to commodities risk using the Simplified Approach. Each position in commodities or commodity derivatives is expressed in terms of the standard unit of measurement. The spot price in each commodity is expressed in the reporting currency.

The capital requirements for each commodity are calculated as the summation of the following:

- 15% x net position (long or short) x spot price for the commodity
- 3% x gross position (long plus short) x spot price for the commodity

The overall capital requirements for commodities risk are the sum of capital requirements for each commodity. The Group's Commodities risk for the year was €2,773k

**Table 22: Capital requirements for Commodities risk**

Category	Net short €000	Net Long €000	Capital Requirements €000	Risk Exposure Amount €000
Precious Metals	-	1,095	197	2,463
Cryptos	-	93	-	93
Other	20	151	20	58
<b>Total</b>	<b>20</b>	<b>1,246</b>	<b>222</b>	<b>2,773</b>

### 5.5.4. Interest Rate Risk

Interest rate risk is the risk that the value of financial instruments will fluctuate due to changes in market interest rates. The Group is exposed to interest rate risk in relation to its bank deposits and from the interest charged on the derivative financial instruments that remain open overnight.

The Group's income and operating cash flows are substantially independent of changes in market interest rates as the Group has no significant interest-bearing assets and liabilities. The bank balances held in current accounts have no significant interest.

The Group's management monitors the interest rate fluctuations on a continuous basis and acts accordingly.

### 5.6. Operational Risk

Operational risk means the risk of loss resulting from inadequate or failed internal processes, people and systems or from external events. Operational risk includes legal risk but excludes strategic and reputational risk.

The following list presents some event-type categories, included in operational risk, with some examples for each category:



<b>Internal Fraud</b>	<ul style="list-style-type: none"> <li>• misappropriation of assets;</li> <li>• tax evasion;</li> <li>• intentional mismarking of positions;</li> <li>• bribery.</li> </ul>
<b>External Fraud</b>	<ul style="list-style-type: none"> <li>• theft of information;</li> <li>• hacking damage;</li> <li>• third-party theft;</li> <li>• forgery.</li> </ul>
<b>Employment Practices and Workplace Safety</b>	<ul style="list-style-type: none"> <li>• discrimination;</li> <li>• workers compensation;</li> <li>• employee health;</li> <li>• safety.</li> </ul>
<b>Clients, Products, &amp; Business Practice</b>	<ul style="list-style-type: none"> <li>• market manipulation;</li> <li>• antitrust;</li> <li>• improper trade.</li> </ul>
<b>Damage to physical assets</b>	<ul style="list-style-type: none"> <li>• damage to physical assets from a natural disaster, e.g. earthquake.</li> </ul>
<b>Business Disruption &amp; Systems Failures</b>	<ul style="list-style-type: none"> <li>• utility disruptions;</li> <li>• software failures;</li> <li>• hardware failures.</li> </ul>
<b>Execution, Delivery, &amp; Process Management</b>	<ul style="list-style-type: none"> <li>• data entry errors;</li> <li>• accounting errors;</li> <li>• failed mandatory reporting;</li> <li>• negligent loss of Client assets.</li> </ul>

The Group manages operational risk through a control-based environment in which processes are documented and transactions are reconciled and monitored. This is supported by continuous monitoring of operational risk incidents to ensure that past failures are not repeated. Furthermore, the Group has in place policies and processes whose implementation assists with the evaluation and management of any exposures to operational risk.

The Group has implemented an operational risk management framework designed to ensure that operational risks are assessed, mitigated and reported in a consistent manner consisting of, inter alia, the following components:

- Maintaining a four-eye structure and implementing board oversight over the strategic decisions made by the heads of departments;
- A IT Disaster Recovery Plan has been designed in order to be used in the event of a force majeure affecting the Group's internal systems and databases; and



- Maintenance of Risk Registers in the Context of the ICAAP;
- A Business Continuity Plan has been implemented which helps protect all of the Group's information databases including data, records and facilities.
- The majority of actions occurring in the Group's systems are automated and therefore it is less likely that a human error will occur;
- Review of risks and controls as part of the Internal Audit function;
- Regular review and updating of the Group's policies;

Following the outbreak of COVID-19 in Cyprus, the Firm has taken the required measures to ensure that its employees have access to its technology infrastructures necessary for the completion of their tasks and that additional system for critical functions are being provided. In this respect, the Business Continuity Plan has been amended accordingly. For the calculation of operational risk in relation to the capital adequacy reports, the Group uses the Basic Indicator Approach (BIA). Under the BIA, the own funds requirement for operational risk is equal to 15% of the average over three years of the relevant indicator. Based on the relevant calculations the Group's exposure to Operational Risk, as at 31 December 2020, was **€11,406k** as provided by the table below:

**Table 23: Operational Risk capital requirements**

Basic Indicator Approach	Audited year	Audited year	Audited year
	2018 €'000	2019 €'000	2020 €'000
Relevant Indicator	3,862	6,296	8,092
<b>Average</b>	<b>6,083</b>		
<b>Operation Risk Exposure Amount</b>	<b>11,406</b>		
<b>Own Funds Requirement</b>	<b>912</b>		

Under the Basic Indicator Approach, the capital requirement for operational risk is equal to 15% of the average of three years of the above relevant indicator, resulting to €912k capital requirements.

### 5.7. Credit Valuation Adjustment Risk

Credit Valuation Adjustment (CVA) means an adjustment in the mid-market valuation of the portfolio of transactions with a counterparty. This adjustment reflects the current market value of the credit risk of the counterparty to the Group. The Group calculates CVA risk for Securities financing transactions, for transactions with qualifying central counterparties and transactions with financial counterparties. The Group uses the standardised method in order to capture the credit risk of derivative counterparties not already included in Counterparty Credit Risk (CCR) (i.e. the potential loss on derivatives due to increase in the credit spread of the counterparty).

**Table 24: Credit Valuation Adjustment (CVA)**

Credit Valuation Adjustment	Exposure Value €'000	Risk Exposure €'000	Capital Requirement €'000
<b>Standardised Method</b>	466	455	11

## 6. LEVERAGE RATIO

The Group shall disclose the Leverage Ratio and how it applies the definition of Tier 1 Capital.

The leverage ratio is a supervisory tool for the European Union, which it is in line with international agreements. Moreover, it is a supplementary non-risk based ratio that aims in monitoring the excessive built-up of leverage on the balance sheet of institutions. The leverage ratio is expressed as a percentage of Tier 1 Capital over the total leverage exposure measure.

The total leverage exposure measure is defined as the sum of exposure values of all assets and all off-balance sheet items not deducted when calculating Tier 1 Capital. The Leverage Exposure measure includes:

- All On-balance sheet assets;
- Derivative exposures;
- Securities Financing Transaction exposures;
- Other non-trading book exposures.

The Basel Committee has set a benchmark of 3% for a minimum Leverage ratio.

As at 31 December 2020, the leverage ratio of the Group was 59.84% on a consolidated basis. The table below provides a breakdown of total leverage ratio exposures for the group.

**Table 25: Leverage Ratio**

Leverage Ratio Exposure	€000
<b>Exposure Values</b>	
Derivatives: <i>Replacement cost associated with all derivatives transactions</i>	751
Derivatives: <i>Add-on amounts for PFE associated with all derivatives transactions</i>	4,456
Other assets: <i>On-balance sheet items (excluding derivatives, SFTs and fiduciary assets, but including collateral)</i>	6,523
<b>Total exposures</b>	<b>11,730</b>
<b>Capital and regulatory adjustments</b>	
Tier 1 Capital	<b>7,019</b>
<b>LEVERAGE RATIO</b>	<b>59.84%</b>

The Group monitors leverage closely in order to ensure that any possible excess of the Leverage Limit will be identified and managed promptly. The Group's leverage ratio is well above the minimum ratio of 3%.

## **7. OTHER RISKS**

### **7.1. Concentration Risk**

Concentration Risk includes large individual exposures and significant exposures to companies whose likelihood of default is driven by common underlying factors such as the economy, geographical location, instrument type etc. Concentration risk was partly addressed through diversification of counterparties, namely banking institutions.

The Group's experience in the collection of trade receivables has never caused debts which are past due and have to be impaired. The Group has a policy in place to monitor debts overdue by preparing debtors ageing reports.

#### **Large Exposures**

The Group shall disclose any additional capital requirements derived from large exposures in the Group's trading book.

A large exposure is defined as the total exposure of a firm to a client or group of connected clients, whether in the banking book or trading book or both and its value is equal to or exceeds 10% of its eligible capital.

Where the amount of €150 million is higher than 25 % of the institution's eligible capital the value of the exposure, after taking into account the effect of credit risk mitigation in accordance with Articles 399 to 403 shall not exceed a reasonable limit in terms of the institution's eligible capital. That limit shall be determined by the institution in accordance with the policies and procedures referred to in Article 81 of Directive 2013/36/EU, to address and control concentration risk. This limit shall not exceed 100 % of the institution's eligible capital.

Large exposures related to the trading book are subject to additional capital requirements as per the Article 397 of the CRR. Moreover, the capital charge is associated with the trading book exposure for each client or group of connected clients exceeding the large exposure limit times a multiplier which is defined on table 1 of the aforementioned article.

According to Paragraph 61- Limitations on exposures to directors and shareholders of the Directive, a CIF is not allowed to have exposures to all its directors more than 1% and to all its shareholders that are not an institution, more than 2% of its eligible capital. Exposures to shareholders and directors are monitored and kept within the limits.

Furthermore, the allowable limits to institutions (100% of the total eligible capital) and to non-institutions (25% of the total eligible capital) are closely monitored and controlled. As at 31 December 2020, the Group's exposures were all within the maximum allowable limits.

Upon the implementation of the new prudential framework, Investment Firms under Class 2 shall monitor and control their large exposures in order to ensure that are compliant with the maximum allowable limits set by Article 37 of the IFR.

### **7.2. Reputation Risk**

Reputation risk is the current or prospective risk to earnings and capital arising from an adverse perception of the image of the Group on the part of customers, counterparties, shareholders,

investors or regulators. Reputation risk could be triggered by poor performance, the loss of one or more of the Group's key directors, the loss of large customers, poor customer service, fraud or theft, customer claims, legal action and regulatory fines.

The Group has transparent policies and procedures in place when dealing with possible customer complaints in order to provide the best possible assistance and service under such circumstances. The possibility of having to deal with customer claims is very low as the Group provides high quality services to customers.

### **7.3. Strategic Risk**

Strategic Risk could occur as a result of adverse business decisions, improper implementation of decisions or lack of responsiveness to changes in the business environment. The Group's exposure to strategic risk is moderate as policies and procedures to minimize this type of risk are implemented in the overall strategy of the Group.

### **7.4. Business Risk**

Business Risk includes the current or prospective risk to earnings and capital arising from changes in the business environment including the effects of deterioration in economic conditions. Research on economic and market forecasts are conducted with a view to minimize the Group's exposure to business risk. These are analyzed and taken into consideration when implementing the Group's strategy.

### **7.5. Capital Risk Management**

Capital Risk is the risk that the Group will not comply with capital adequacy requirements. The Group's objectives when managing capital are to safeguard the Group's ability to continue as a going concern in order to provide returns for shareholders and benefits for other stakeholders. The Group has a regulatory obligation to monitor and implement policies and procedures for capital risk management. Specifically, the Group is required to test its capital against regulatory requirements and has to maintain a minimum level of capital. This ultimately ensures the going concern of the Group. Such procedures are explained in the Procedures Manual.

The Group is further required to report on its capital adequacy quarterly and has to maintain at all times a minimum total capital adequacy ratio which is set at 8%. The capital adequacy ratio expresses the capital base of the Group as a proportion of the total risk weighted assets. Management monitors such reporting and has policies and procedures in place to help meet the specific regulatory requirements. This is achieved through the preparation on a monthly basis of management accounts to monitor the financial and capital position of the Group.

### **7.6. Regulatory Risk**

Regulatory risk is the risk the Group faces by not complying with relevant Laws and Directives issued by its supervisory body. If materialized, regulatory risk could trigger the effects of reputation and strategic risk. The Group has documented procedures and policies based on the requirements of relevant Laws and Directives issued by the Commission; these can be found in the Procedures Manual. Compliance with these procedures and policies are further assessed and reviewed by the Internal Auditors and suggestions for improvement are implemented by

management. The Internal Auditors evaluate and test the effectiveness of the Group's control framework at least annually. Therefore the risk of non-compliance is very low.

### **7.7. Legal and Compliance Risk**

Legal and Compliance Risk could arise as a result of breaches or non-compliance with legislation, regulations, agreements or ethical standards and have an effect on earnings and capital. Following the replacement of the Law 144(I)/2007 by Law 87(I)/2017 for the purpose of harmonization with MIFID II, several regulatory changes were applied that may cause the exposure to compliance risk. The Group among others is also exposed to legal and compliance risk arising from inability or inadequate arrangements to comply with the requirements related to the:

- Product Governance (Circular C236, Directive DI87-01),
- New rules governing derivatives on virtual currencies (Circular C268),
- Commission Delegated Regulation of 8 June 2016 of the European Parliament and of the Council with regard to regulatory technical standards for the annual publication by investment firms of information on the identity of execution venues and on the quality of execution,
- Providing Investment Services in CFDs,
- European Securities and Markets Authority Decision (EU) 2019/155 of 23 January 2019 renewing the product intervention measures relating to the marketing, distribution or sale of contracts for differences to retail clients,
- 4<sup>th</sup> AML Directive (Directive (EU) 2015/849)
- 5<sup>th</sup> AML Directive (Directive (EU) 2015/849)
- EMIR Refit
- Recovery and Resolution Plan (Circular C351, Regulation 2018/1624)

The probability of such risks occurring is relatively low due to the detailed internal procedures and policies implemented by the Group and regular reviews by the Internal Auditors. The structure of the Group is such to promote clear coordination of duties and the management consists of individuals of suitable professional experience, ethos and integrity, who have accepted responsibility for setting and achieving the Group's strategic targets and goals. In addition, the Board meets at least annually to discuss such issues and any suggestions to enhance compliance are implemented by management.

### **7.8. IT Risk**

IT risk could occur as a result of inadequate information technology and processing, or arise from an inadequate IT strategy and policy or inadequate use of the Group's information technology. Specifically, policies have been implemented regarding back-up procedures, software maintenance, hardware maintenance, use of the internet and anti-virus procedures. Materialization of this risk has been minimized to the lowest possible level.

### **7.9. Risk Reporting**

The Group maintains a system in place to record any risk event incurred on a special form duly completed by personnel of each department and is submitted to the Compliance officer and Risk manager when such event occur.

### **7.10. Liquidity Risk**

Liquidity risk is defined as the risk when the maturity of assets and liabilities does not match. An unmatched position potentially enhances profitability, but can also increase the risk of losses. The Group has policies and procedures with the object of minimizing such losses.

As a class 2 Investment Firm, the Company will be requested upon the implementation of the new prudential framework to hold an amount of liquid assets (defined as per the Article 43 of the IFR) equal to at least one third of the fixed overhead requirement. The Company has already assessed whether it has adequate liquid assets and took the appropriate measures to ensure compliance with the new Liquidity Requirement which will be implemented on 26 June 2021.

### **7.11. Conduct Risk**

Conduct risk is defined as the risk of an action, by an individual, financial institution or the industry as a whole, which leads to customer detriment or, undermines market integrity. This can bring sanctions and negative publicity. Moreover, EBA has defined conduct risk as the current or prospective risk of losses to an institution arising from inappropriate supply of financial services including cases of wilful or negligent misconduct. Consequently, conduct risk arises from failures of designated liquidity providers located in third countries associated with the Group.

Additionally, the Group is exposed to negative balances with its Liquidity Providers, in case of fast-pacing volatile market, where the LP cannot close a position at the stop out limit. Therefore, the Group may be exposed to conduct risk arising from inadequate agreements with the Liquidity Providers and/or with the third parties that hold client's funds.

As part of risk management policy and tools, the Group has procedures in place to diversify its liquidity providers and monitor their financial position on an on-going basis. The financial soundness of the liquidity providers is closely monitored and the Group is ready to switch to alternative LPs, if necessary. Furthermore, the receivable/payable amounts with the LPs are monitored on a daily basis. In particular, the Group examines its existing procedures and arrangements with respect to the products offered and services provided.



## 8. REMUNERATION POLICY

The Group have established remuneration policy that aims to set out the remuneration practices taking into consideration the salaries and benefits of the staff, in accordance with the provisions of Directive as well as the Circular 031 on remuneration policies and practices, where these comply with specific principles in a way and to the extent that is appropriate to the Group's size, internal organization and the nature, scope and Group's remuneration strategy is designed to reward and motivate the people who are committed to maintaining a long term career with the Group and performing their role in the interests of the Group.

The design of the Policy is approved by the people who effectively direct the business, after taking advice from the compliance function, and implemented by appropriate functions to promote effective corporate governance. The people who effectively direct the business are responsible for the implementation of remuneration policies and practices and for preventing and dealing with any relevant risks, that remuneration policies and practices can create. The Board discusses remuneration policy matters at least annually.

Furthermore, the Policy also benefits from the full support of senior management or, where appropriate, the supervisory function, so that necessary steps can be taken to ensure that relevant persons effectively comply with the conflicts of interest and conduct of business policies and procedures. Moreover, the Policy adopts and maintains measures enabling them to effectively identify where the relevant person fails to act in the best interest of the client and to take remedial action.

### 8.1. Remuneration System

The remuneration system and policy is concerned with practices for those categories of staff whose professional activities have a material impact on its risk profile, i.e. the Senior Management and members of the Board; the said practices are established to ensure that the rewards for the "executive management" are linked to the Group's performance, to provide an incentive to achieve the key business aims and deliver an appropriate link between reward and performance whilst ensuring base salary levels are not set at artificially low levels. The remuneration is a significant method of attracting and retaining key employees whose talent can contribute to the short and long term success of the business.

The remuneration mechanisms employed by the Group are well known management and human resources tools that take into account the employee's skills, experience and performance, whilst supporting at the same time the long-term business objectives. One of the key factors considered is an appropriate link between performance-based variable remuneration whilst ensuring base salary levels are not set at artificially low levels. Other factors taken into account are the following:

- (i) the financial viability of the Group;
- (ii) the general financial situation of the state in which the Group operates;
- (iii) the Employee's personal objectives (such as personal development), compliance with regulatory requirements (including the "best execution policy" and other protective policies aiming towards the best interest of the client), systems and controls, commitment and work ethics;

The remuneration system takes into account the highly competitive sector in which the Group operates, and the considerable amount of resources the Group invests in each member of the



staff. The remuneration includes all forms of benefits provided by the Group to its staff and can be Financial or non-Financial remuneration.

It is noted that the Group has taken into account its size, internal organisation and the nature, the scope and the complexity of its activities and it does not deem necessary the establishment of a specific remuneration committee. Decisions on these matters are taken on a Board level while the remuneration policy is periodically reviewed.

The remuneration varies for different positions/roles depending on each position's actual functional requirements, and it is set at levels which reflect the educational level, experience, accountability, and responsibility needed for a staff member to perform each position/role. The remuneration is also set in comparison with standard market practices employed by the other market participants/ competitors. Furthermore, the employee's personal goals and performance evaluation in relation to the objectives set up at the beginning of the period and the employee's professional conduct with clients are taken into account in order to determine the remuneration.

The total remuneration of staff currently consists of a fixed and a variable component. The fixed remuneration includes salary, fixed pay allowance and other cash allowances and all are determined based on the role and position of each employee, taking into account the experience, seniority, education, responsibility, and market conditions. Fixed remuneration is also set in comparison with standard market practices employed by the other market participants/ competitors. The Group's policy is to offer to all Employees a fixed remuneration that is above the minimum legal requirements (minimum salary as set by the relevant Employment laws and directives).

The variable remuneration is a performance-based remuneration which motivates and rewards staff members based on their results in relation with the targets set in the beginning of the year. This kind of remuneration is not guaranteed and the BoD has determined a maximum percentage of variable remuneration relative to the fixed remuneration in order to ensure a compliant ratio between these two kinds of remuneration. Although, the maximum limit on variable remuneration set at 100% of fixed salary, the limit could be set at 200% upon shareholders' approval according to the Article 94 of Directive 2013/36/EU.

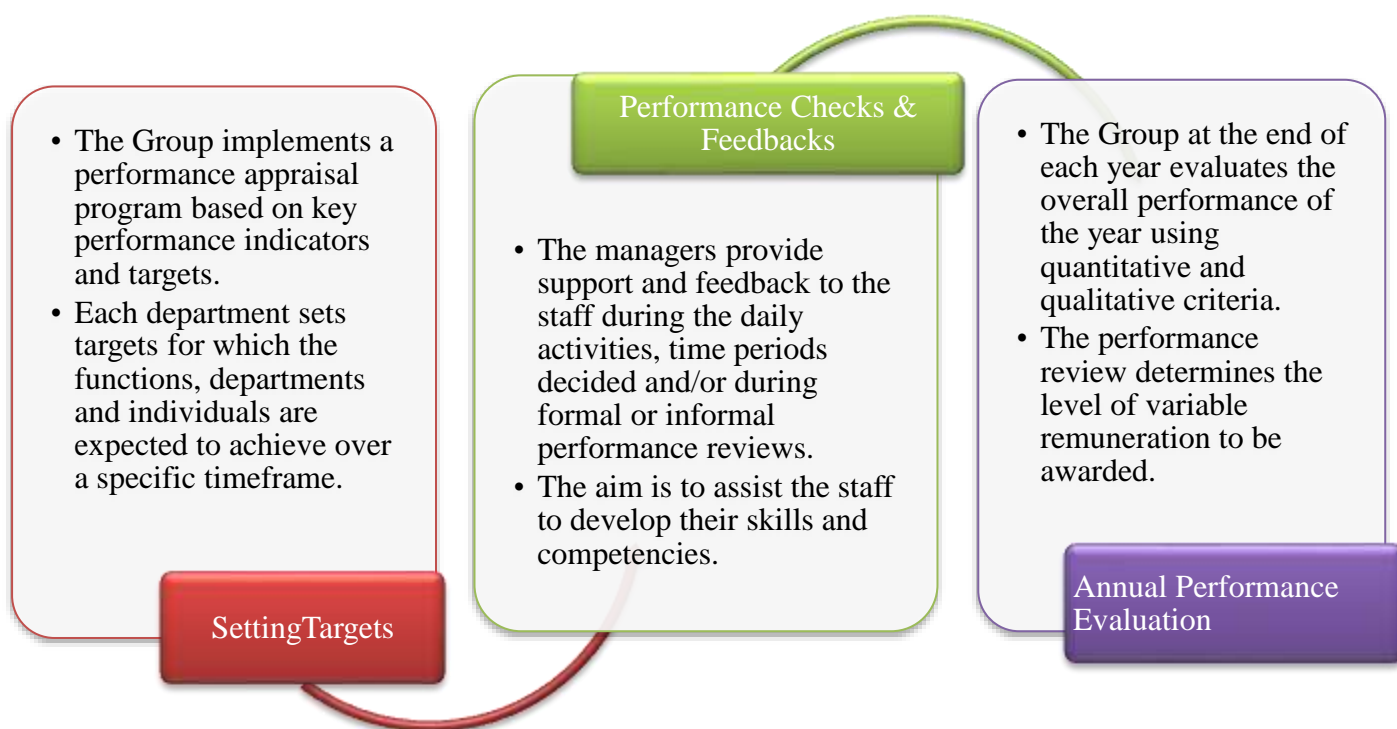
Furthermore there no remuneration is payable under deferral arrangements (with vested or unvested portions). Finally the Group did not pay any non-cash remuneration for the year under review, since the does not have non-cash instrument, such as shares or other equivalent non-cash instrument, in place.

## **8.2. Link between the pay and performance**

The Group recognises the responsibility that the Staff has in driving its future success and delivering value for the business and that remuneration is a key component in motivating and compensating its employees. Furthermore, the overall remuneration policy incorporates an annual variable incentive compensation reflecting individual performance and overall performance.

The individual performance is assessed during the annual appraisal process, which establishes objectives for all staff covering both financial and non-financial factors, specific behavioral competencies including compliance and risk management behaviors with regards to the procedures.

Further to the above, the Group implements a performance appraisal method, which is based on a set of Key Performance Indicators, developed for each business unit and its target is to promote the healthy competition amongst personnel, analysis of weak and strong sides of each employee performance-based and give feedback to the staff member in order to motivate them to be improved. At the most of the times, the performance appraisal takes place in a multiyear framework in order to ensure that the appraisal process assess employee's long-term performance. However, sometimes the performance appraisal is performed on medium and short-term basis, and the performance indicators of this type of performance appraisal include quantitative as well as qualitative criteria. The appraisal is being performed as follows:



### **8.3. Remuneration of Senior Management Personnel and Directors**

The remuneration policy is intended to ensure that the business will attract and retain the most qualified Senior Management Personnel and Directors. As stated above, in the criteria used for determining the remuneration of the directors are segregated into quantitative and the qualitative criteria.

The quantitative remuneration criteria mostly rely on numeric and financial data such as the business's performance and the individual performance evaluation and ratings of each member of the staff whose professional activities affect the risk profile of the firm.

In addition to the quantitative criteria, the Group has put in place qualitative criteria which include compliance with regulatory requirements and internal procedures, fair treatment of clients and client satisfaction. Moreover, the remuneration of the non-executive directors is fixed and it is set at a level that is market aligned and reflects the qualification and competencies required based on the business's size and complexity, the responsibilities and the time that the non-executive directors are expected to consume.

The remuneration of the senior management personnel of the Group, including Board are shown in the following tables:

**Table 26: Remuneration analysis split by Senior Management and key management personnel**

2020	Senior Management (Executive Directors)	Key Management personnel	Non-Executive Directors
<b>Fixed reward</b>	601,367	306,874	12,296
<b>Variable reward</b>	51,000	-	-
<b>Total</b>	<b>652,367</b>	<b>306,874</b>	<b>12,296</b>
<b>Number of beneficiaries</b>	<b>2</b>	<b>8</b>	<b>2</b>

\*The variable to fixed remuneration ratio as at 31 December 2020 was 6%.

Companies are required to disclose the number of natural persons that are remunerated €1mln or more per financial year, in pay brackets of €1mln, including their job responsibilities, the business area involved and the main elements of salary, bonus, long-term award and pension contribution. Nevertheless, currently there are no natural persons at the Group that are remunerated €1mln or more per financial year and as such the above disclosure is not applicable. No sign-on payments have been awarded during 2020, while no severance payments were paid during the year. Furthermore, aggregate remuneration analyzed by business area for the Group is presented below:

**Table 27: Aggregate remuneration analysis by business area**

Business Area	Aggregate Remuneration
	€
Control Functions	755,675
Brokerage Department	71,892
Dealing on Own Accounts Department	37,926
Back Office Department	58,570
IT Department	35,178
<b>Total</b>	<b>955,675</b>

\*Control functions include the Executive Directors and Compliance Department